



ILLUSTRATED PARTS LIST

**THIS SUPPLEMENT COVERS WIRING DIAGRAMS AND ENGINE PARTS
AVAILABLE FROM LEEBOY PARTS SALES.**

**FOR ALL ENGINE PARTS NOT LISTED ON THE FOLLOWING PAGES,
CONTACT YOUR ENGINE DEALER.**

420 ROLLER

Manual No. 420498-01

For Units with Serial No. 45557 and higher

Revised 06-15-07



ILLUSTRATED PARTS LIST

TABLE OF CONTENTS

	Page
INTRODUCTION	IPL-3
ILLUSTRATED PARTS LIST	IPL-3
HOW TO USE THE IPL.....	IPL-3
EXPLANATION OF PART NUMBERS	IPL-3
GENERAL SYSTEM OF ASSEMBLY ORDER	IPL-3
ALPHABETICAL INDEX	IPL-3
EQUIPMENT DESIGNATOR INDEX.....	IPL-3
FIGURE 1. KUBOTA ENGINE GROUP	IPL-4
FIGURE 2. MISCELLANEOUS GROUPS - KUBOTA	IPL-7
FIGURE 3. HATZ ENGINE & MISCELLANEOUS GROUPS	IPL-9
FIGURE 4. FRONT END ASSEMBLY	IPL-10
FIGURE 5. REAR END ASSEMBLY	IPL-12
FIGURE 6. CANOPY & ROLLBAR GROUPS	IPL-14
SCHEMATICS	
ELECTRICAL SCHEMATIC, 420 ROLLER	SCHM-1
ELECTRICAL SCHEMATIC, KUBOTA ENGINE	SCHM-2
ELECTRICAL SCHEMATIC, GAUGE PANEL	SCHM-3
ELECTRICAL SCHEMATIC, WARNING LIGHTS	SCHM-4



ILLUSTRATED PARTS LIST

INTRODUCTION

This Illustrated Parts List (IPL) is intended for use in identifying and requisitioning replacement parts.

ILLUSTRATED PARTS LIST

HOW TO USE THE IPL

In column 1, FIG refers to the corresponding illustration, and ITEM refers to the item number for the referenced illustration.

Parts with a dash preceding the ITEM number are not illustrated.

In column 2, PART NUMBER refers to the associated FIG or ITEM in column 1.

In column 3, NOMENCLATURE refers to the description of the associated PART NUMBER. Bullets preceding the description are explained in **General System Of Assembly Order**, in following paragraphs.

In the case of sub-assemblies, parts are captioned ATTACHING PARTS and are listed immediately following the attached part(s). The -----*----- symbol follows the last item of the attached parts group.

In column 4, UNITS PER ASSY refers to the quantity required to assemble the item illustrated in the associated FIG. Unit of measure may be EACH, FT, LBS or other.

In the case of sub-assemblies, the quantities listed for the attaching parts are the quantity required to attach one item.

NHA notations at item descriptions refer to Next Higher Assembly.

On the associated illustrations, numbers in parentheses next to the item number, refer to the quantities used at that assembly location.

EXPLANATION OF PART NUMBERS

If standard parts (those with AN, MS, NAF, NAS prefixes) are used, the standard part number is listed in the PART NUMBER column.

If a company other than LeeBoy is referred to as the original manufacturer, these parts may carry the original manufacturer's part number or a LeeBoy part number. These manufacturers are identified by an appropriate vendor code following the nomenclature. If the part number is a LeeBoy part number, the original manufacturer's part number is given after his vendor code. Vendor codes are in accordance with the current issue of Cataloguing Handbook, "Commercial and Government Entity" (H4-1 and H4-2) and are preceded by the capital letter "V".

When a vendor code cannot be obtained from the H4-1 and H4-2 Cataloguing Handbook, the manufacturer's full name and address are included in the parts list. Government standard parts such as AN, MS, NAF and NAS parts are not identified with a vendor code.

GENERAL SYSTEM OF ASSEMBLY ORDER

The indenture system used in the Illustrated Parts List shows relationship of parts and assemblies to the next higher assembly or installation as follows:

1 2 3 4 5 6 7

Installation

- Detail parts for installation
- Assembly
- Attaching parts for assembly
- *-----
- Detail parts for assembly
- Sub-assembly
- Attaching parts for sub-assembly
- *-----
- Detail parts for sub-assembly
- Sub-sub-assembly
- Attaching parts for sub-sub-assembly
- *-----
- Detail parts for sub-sub-assembly

ALPHABETICAL INDEX

An Alphabetical Index is provided as a supplement at the end of the Illustrated Parts List.

EQUIPMENT DESIGNATOR INDEX

If equipment designators are used in place of part numbers at any place in the IPL, an Equipment Designator Index is provided, listing all equipment designators listed in the Illustrated Parts List.

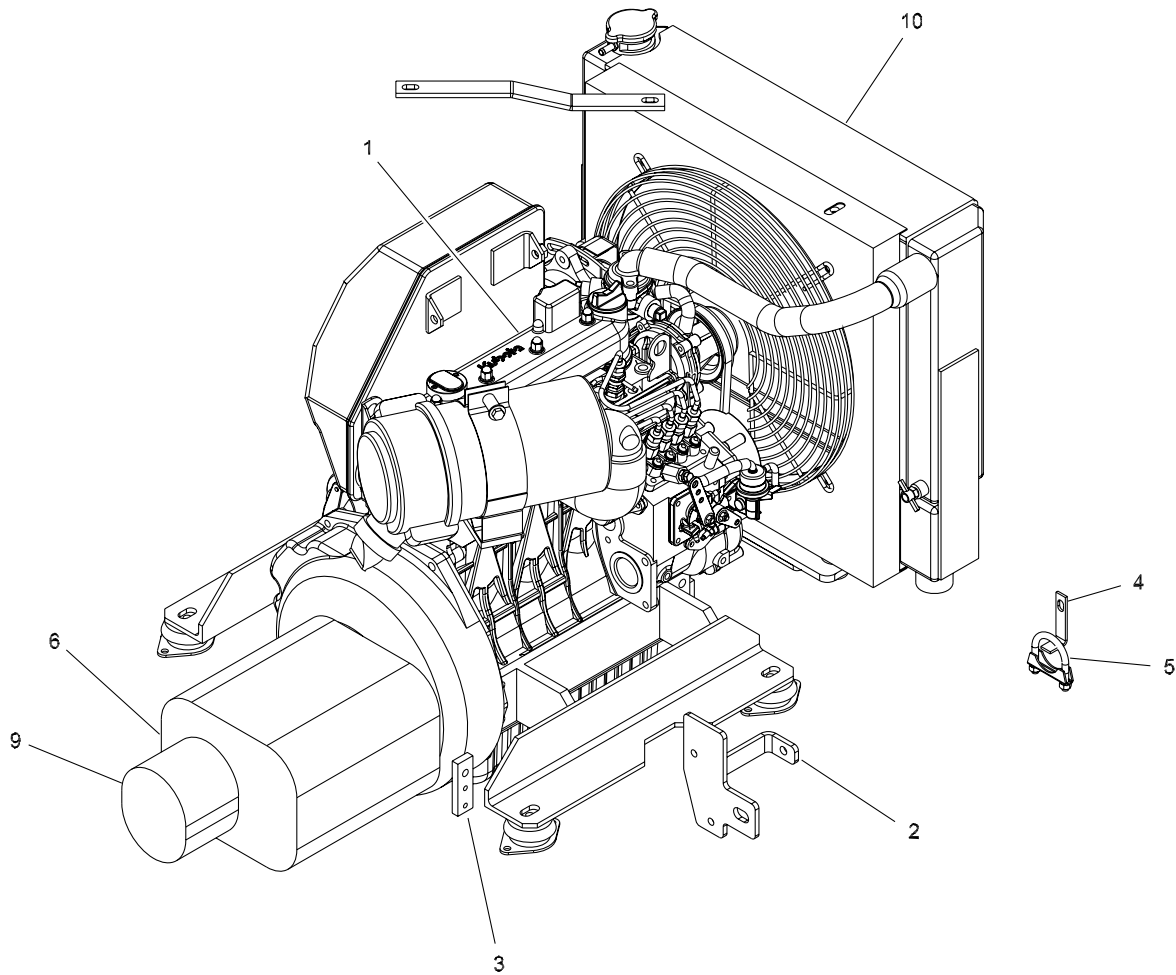


FIGURE 1. KUBOTA ENGINE GROUP

FIGURE 1. KUBOTA ENGINE GROUP

FIG ITEM	PART NUMBER	NOMENCLATURE 1 2 3 4 5 6 7	UNITS PER ASSY
1	987146	ENGINE GROUP	
1	986598	•ENGINE ASSY,400 W/KUBOTA	1
-101	986598-01	••STARTER,ENGINE,KUBOTA	1
-102	986598-02	••HARNESS,ENGINE,KUBOTA (See Schematic at end of IPL)	1
-103	986598-03	••VLV,FUEL SOLENOID	1
-104	986598-04	••FAN,KUBOTA ENGINE,V1505B	1
-105	986598-05	••KIT,FILTER,400 SERIES	1
-201	38778-1	•••FILTER ELEMENT,OIL	1
-202	985909	•••FILTER ELEMENT,AIR,PRIMARY	1
-203	38845-1	•••FILTER ELEMENT,FUEL	1
-204	800019A	•••FILTER ELEMENT,HYD SUCTION	1
-106	986598-06	••COUPLING,PUMP DRIVE,400 SERIES	1
-107	986598-07	••PLATE,PUMP DRIVE,400 SERIES	1
2	986926	•BRKT-CABLE, THROTTLE/PUMP 420	1
3	981223	•EXTENSION, PUMP ACTUATOR	1
4	986790	•BRACKET, TAILPIPE CLAMP	1
5	33306	•CLAMP,MUFFLER,1-1/2"	1
6	530040B	•PUMP,HYD,400S DRIVE	1
9	320232	•PUMP,HYD,GEAR,.85 CIR	1
10	982080-15	•RADIATOR/COOLER	1
-12	37846	•CLEVIS,10-32X1.25,W/.250 PIN	2
-13	851214	•CABLE,PUSH/PULL,90"X3" STROKE	1

- ITEM NOT ILLUSTRATED

FIGURE 2. MISCELLANEOUS GROUPS - KUBOTA

FIG ITEM	PART NUMBER	NOMENCLATURE 1 2 3 4 5 6 7	UNITS PER ASSY
2	TBD	MISCELLANEOUS GROUPS	
-1	160040A	WORK LIGHT	4
-2	160320	ALARM,BACK UP,107DB	1
-3	33964	SWITCH,BACKUP ALARM,NEUTRAL	1
-4	480110	PUMP,WATER SPRAY	1
-5	210893	BEACON,AMBER,ROTATING LIGHT	1
-6	500090A	MANIFOLD,VIBRATOR,MAIN RELIEF	1
-7	500040	SWITCH,TOGGLE,SPST,2-POS	4
-8	36695	FUSE BLOCK,6 GANG,ATC	1
-9	ECG-5802	DIODE,VOLTAGE BLOCKING	1
-10	Buy Locally	BATTERY,12V,725CCA	1
-11	986773	PANEL,GAUGES,KUBOTA	1
-12	986772	PANEL,LIGHTS,KUBOTA	1

- ITEM NOT ILLUSTRATED

FIGURE 3. HATZ ENGINE & MISCELLANEOUS GROUPS

FIG ITEM	PART NUMBER	NOMENCLATURE 1 2 3 4 5 6 7	UNITS PER ASSY
3	TBD	HATZ ENGINE & MISCELLANEOUS GROUPS	
-1	320004	ENGINE,HATZ,2L41C,37HP	1
-2	851479	PLATE,FLYWHEEL PUMP DRIVE	1
-3	320200	ADAPTER,PUMP TO ENGINE	1
-4	320140	MOUNTING PAD,HATZ ENGINE	4
-5	320300	ALTERNATOR,HATZ	1
-6	320250-2	MANIFOLD,EXH,HATZ,2-CYL	1
-7	320090-2L	BELT,ALTERNATOR/BLOWER,HATZ	1
-8	320270	MOTOR,STARTER,HATZ	1
-9	320280	SOLENOID,STARTER,HATZ	1
-10	320290	BLOWER/FAN,HATZ	1
-11	320110	DIP STICK,HATZ ENGINE	1
-12	310060	FILTER ELEMENT,AIR	2
-13	320120	LEVER,THROTTLE,HATZ	1
-14	310080	FILTER ELEMENT,FUEL	1
-15	310090	FILTER,FUEL,IN LINE	1
-16	310070	FILTER ELEMENT,OIL	1
-17	851567	VALVE,SOLENOID,FUEL SHUT OFF	1
-18	320387	SENDING UNIT,ENG OIL PRESSURE	1
-19	HAT01603700	GASKET,MUFFLER/MANIFOLD,HATZ	1
-20	320375	INSTR BOX W/SWITCH & PANEL,HATZ	1
-21	36085	RELAY,12VDC,SPDT,40 AMP,5 PIN	1
-22	320330	MOUNT,STARTER RELAY	1
-23	320340	TERMINAL BLOCK,IGNITION PANEL	1
-24	320390	SWITCH,IGNITION,HATZ	1
-25	320383	INDICATOR LAMP,ENG TEMP	1
-26	320385	INDICATOR LAMP,AIR FILTER	1
-27	320360	LIGHT BULB,ENG INDICATOR LAMP	4
-28	320382	PLUG,HATZ,INSTR PANEL	1
-29	320384	INDICATOR LAMP,ENG OIL PRESS	1
-30	320386	INDICATOR LAMP,BATTERY CHG	1
-31	320380	KEY,IGNITION,HATZ	1
-32	320370	COVER,IGNITION SWITCH,HATZ	1
-33	720110	HORN,12V	1

- ITEM NOT ILLUSTRATED

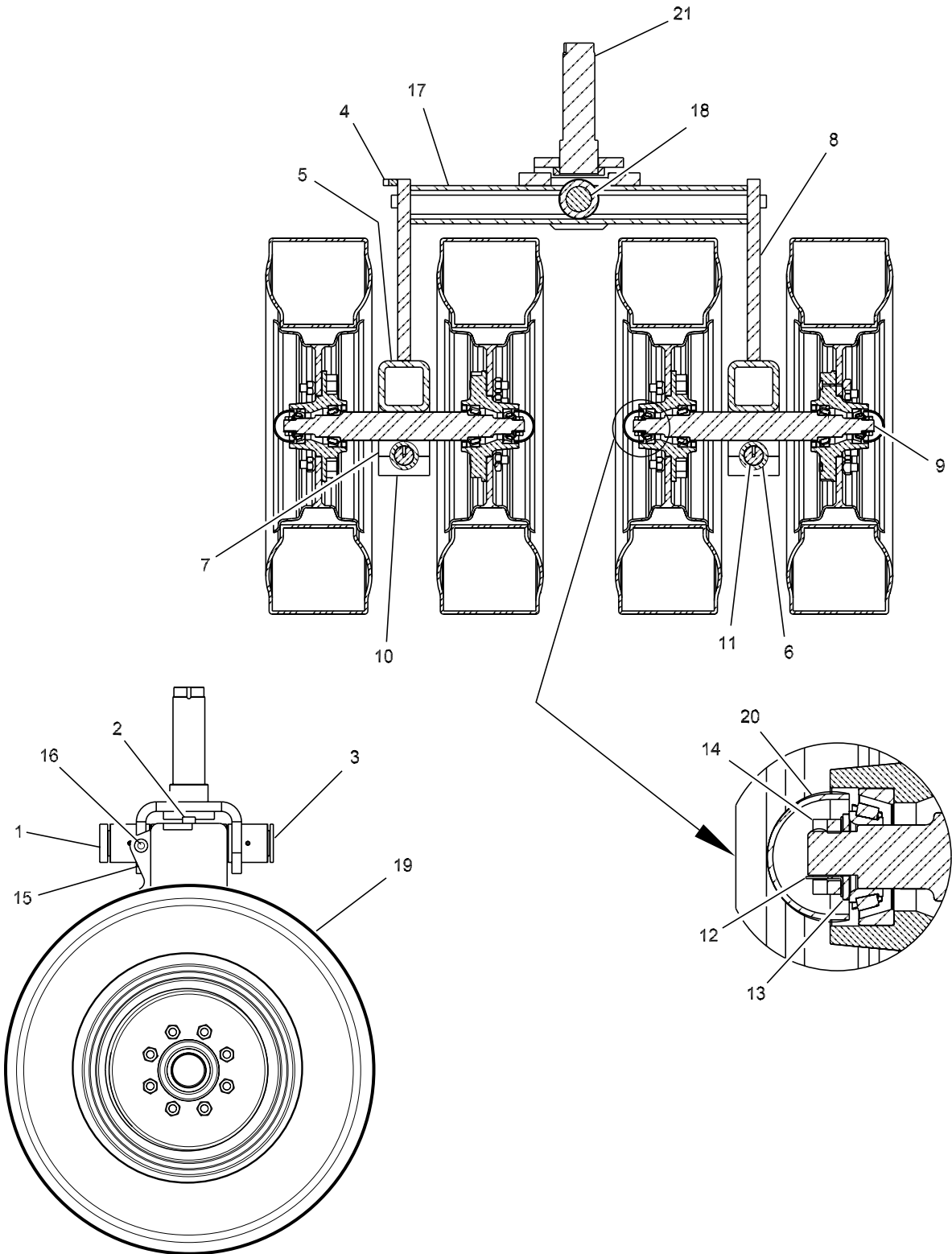


FIGURE 4. FRONT END ASSEMBLY

FIGURE 4. FRONT END ASSEMBLY

FIG ITEM	PART NUMBER	NOMENCLATURE 1 2 3 4 5 6 7	UNITS PER ASSY
4	981262	FRONT END ASSEMBLY, 420	1
1	400545	FRONT END PIVOT PIN CAP	1
2	400561	PIVOT STOP, FRONT END	2
3	420022	WASHER, FRONT YOKE PIN	1
4	400646	SHAFT,2.25 CR X .500 (SPLIT)	1
5	400662	BRACKET, FRONT END CLAMP	2
6	400663	PIVOT HOUSING, FRONT HUB	2
7	400664	FRONT END CLAMP	4
8	400665	FRONT END ARM	2
9	400667	DOUBLE SPINDLE	2
10	420160	CLAMP,FRONT AXLE PIVOT,420	4
11	420181	SHAFT,FRONT WHEEL PIVOT PIN	2
12	610250	LOCK WASHER, FRONT SPINDLE	4
13	610250-1	FLAT WASHER, FRONT SPINDLE	4
14	610260	NUT,SPINDLE	4
15	857156	COCOA MAT MOUNT/420	2
16	857164	COCOA MAT MOUNT/420	2
17	982104	ASSY,CROSS TUBE,FRONT END	1
18	400544	SHAFT,YOKE HORIZONTAL	1
19	420110	WHEEL & TIRE ASSY,420,FRONT	4
20	420150	HUB ASSY,WHEEL	4
21	420032A	STEERING YOKE,400	1
-22	853647	ATTACHMENT TAB	4
-23	620160	BEARING CUP,TANDEM AXLE,INNER	4
-24	102-205-1A	CSHH,.375-16X1.00,GR5	1
-25	102-206-1A	CSHH,.375-16X1.25,GR5	2
-26	102-405-1A	CSHH,.500-13X1.00,GR5	1
-27	102-610-1A	CSHH,.625-11X2.25,GR5	8
-28	102-913-1A	CSHH,1.000-8X3.00,GR5	1
-29	140610	FITTING,LUBE,STR,1/4"-28	4
-30	143-3	NUT,LOCK,.375-16	2
-31	858294	PIVOT,SPRAYBAR MOUNT,420	4
-32	141-609	ROLL PIN,.250X1.25	1
-33	480281	SPRAY BAR SUPPORT,W/M	2
-34	120-3	WASHER,FLAT,USS,.375	6
-35	118-5	WASHER,LOCK,.500	1
-36	118-7	WASHER,LOCK,.625	8

- ITEM NOT ILLUSTRATED

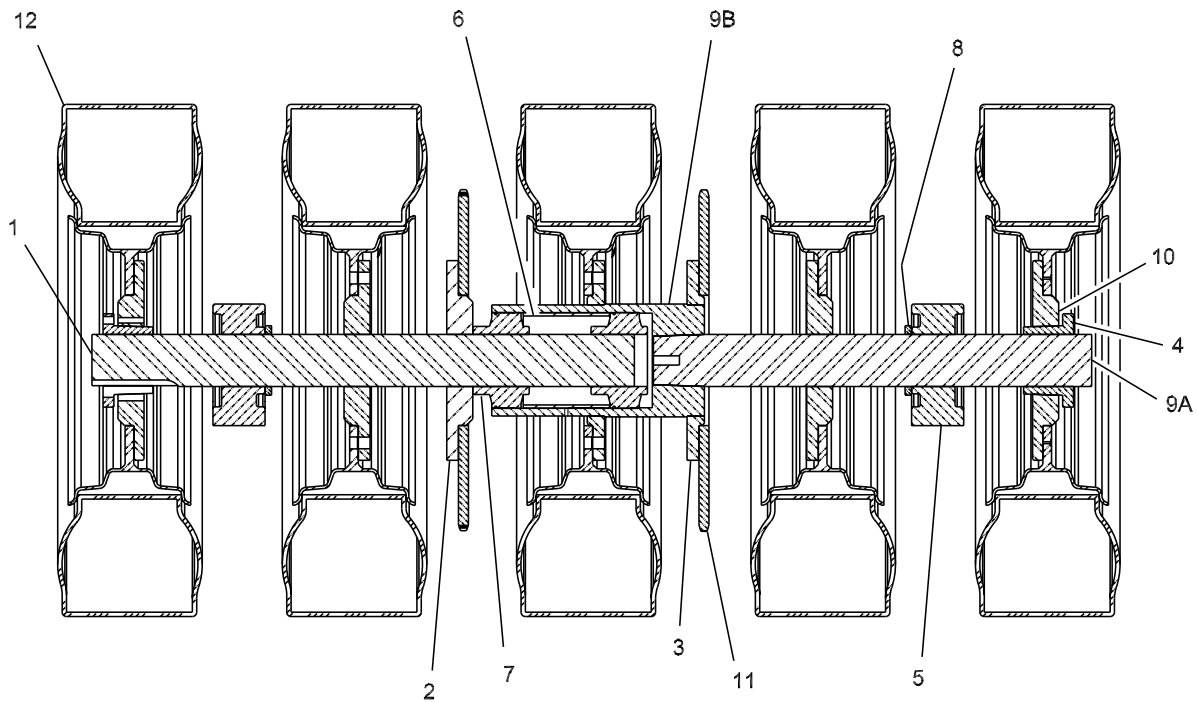


FIGURE 5. REAR END ASSEMBLY

FIGURE 5. REAR END ASSEMBLY

FIG ITEM	PART NUMBER	NOMENCLATURE 1 2 3 4 5 6 7	UNITS PER ASSY
5	981271	REAR END ASSEMBLY, 420	1
1	400682	AXLE,REAR W/O TAPER	1
2	400674	REAR WHEEL FLANGE, 3" HOLE	3
3	400676	REAR WHEEL FLANGE, 6 3/8 HOLE	2
4	430210	BUSHING,TAPER LOCK,3.00	2
5	430230	BEARING,PILLOW BLOCK,3.00	2
6	430271	BEARING SPACER	2
7	520100	BEARING,INSERT,3.00	2
8	857163	AXLE BEARING STOP/420	2
9	983594	ASSY, SPLIT AXLE LEFT HALF	1
9A	400681	AXLE,REAR W/ TAPER	1
9B	400684	BEARING SUPPORT,3" REAR	1
10	400675	REAR WHEEL FLANGE, TAPERED	2
11	430250	SPROCKET,DRIVE AXLE,420	2
12	430200	WHEEL & TIRE ASSY,420,REAR	5
-13	120350	NUT,LUG,420/685	56
-14	120340	STUD,WHEEL,420 REAR/685 REAR	56

- ITEM NOT ILLUSTRATED

ILLUSTRATED PARTS LIST

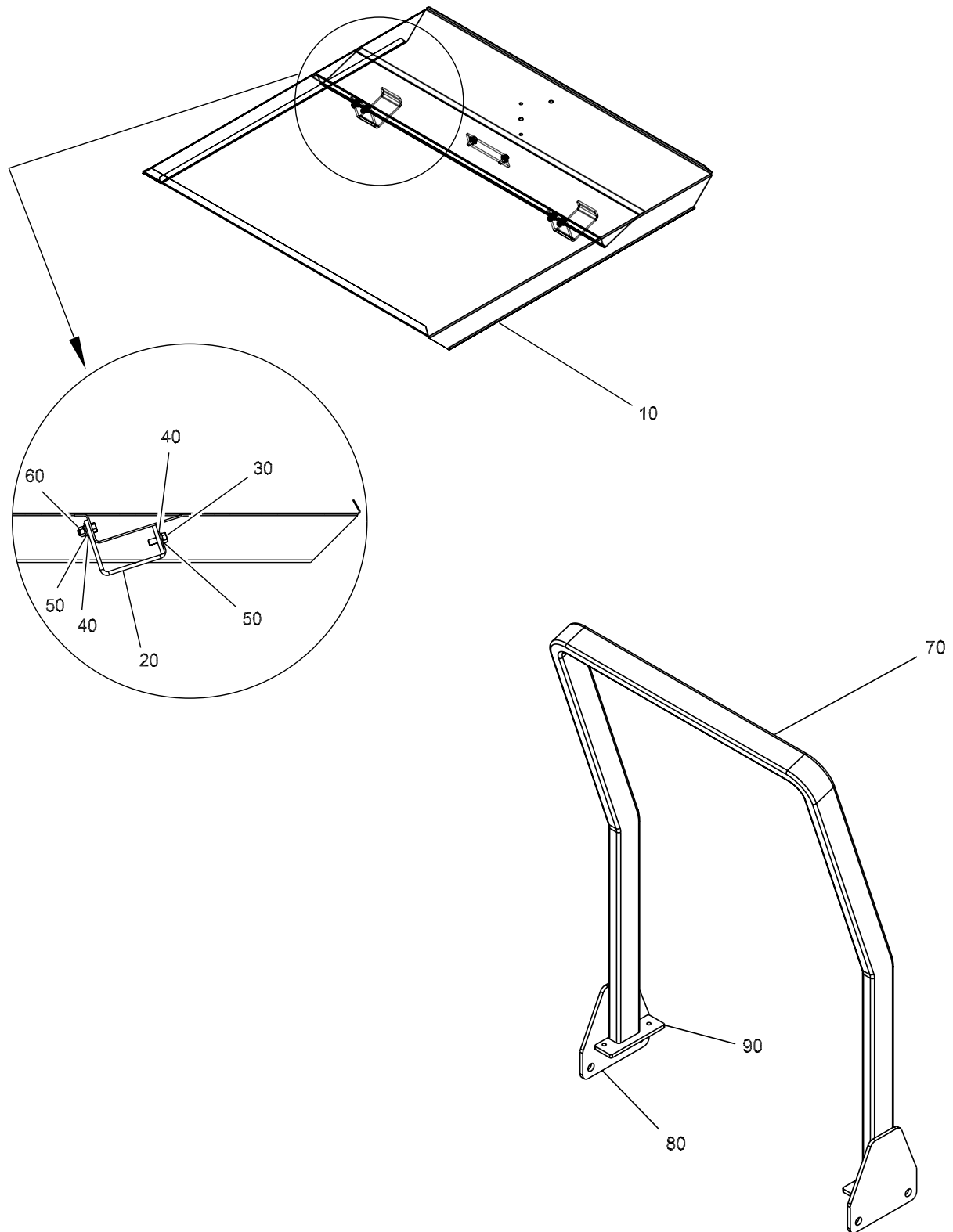


FIGURE 6. CANOPY & ROLLBAR GROUPS

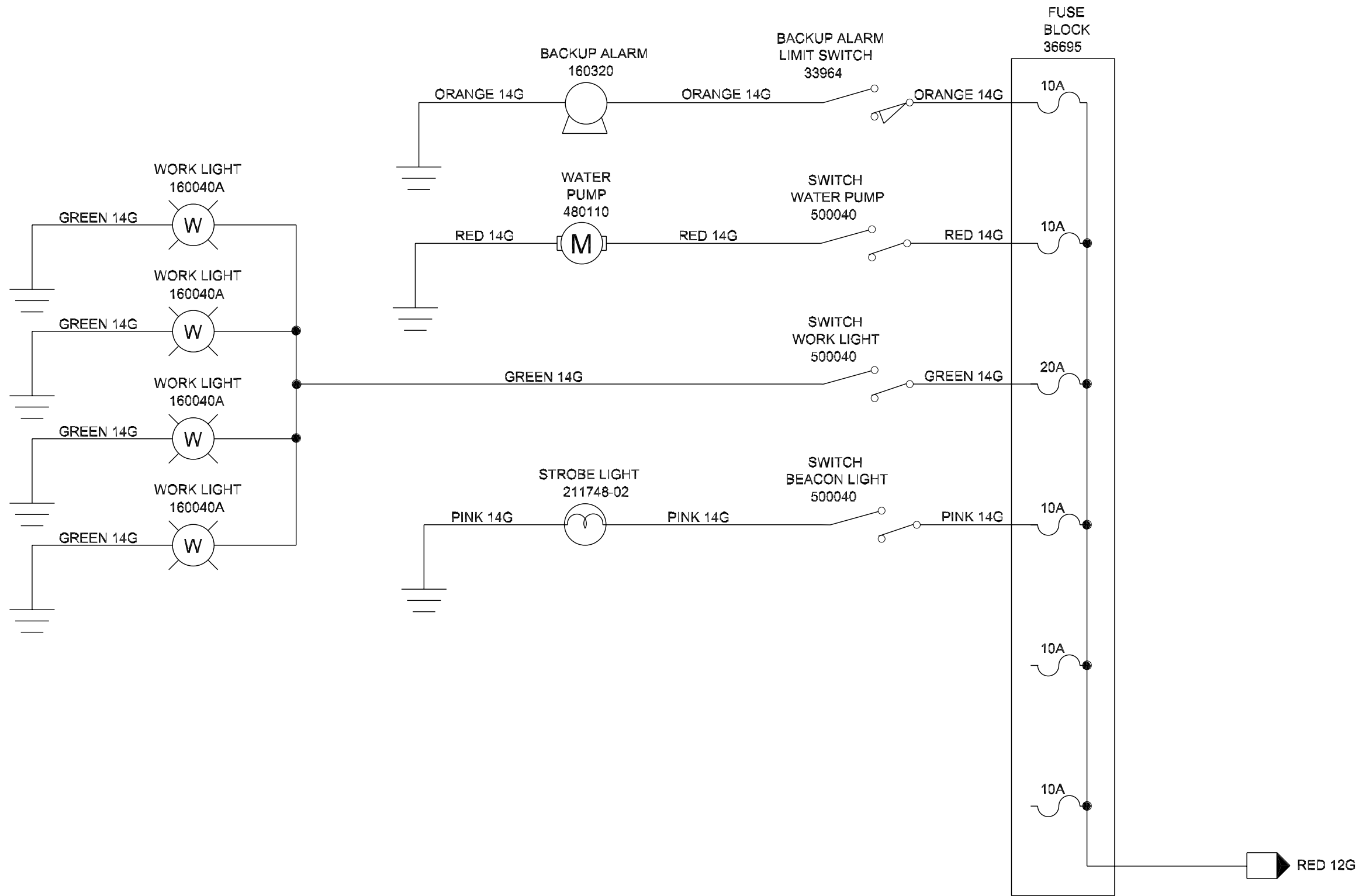


ILLUSTRATED PARTS LIST

FIGURE 6. CANOPY & ROLLBAR GROUPS

FIG ITEM	PART NUMBER	NOMENCLATURE 1 2 3 4 5 6 7	UNITS PER ASSY
6	TBD	CANOPY & ROLLBAR GROUPS	1
1	987715	CANOPY GROUP	OPT
10	987719	CANOPY,W/M	1
20	987718	CLAMP,ROPS	2
30	80221	CSHH,.375-16X1.00,GR5	2
40	80142	WASHER,FLAT,USS,.375	6
50	80162	WASHER,LOCK,.375	6
60	80038	NUT,HEX,.375-16	4
2	987507	ROLLBAR,COMPLETE	1
70	987507-01	TUBE,ROPS	1
80	987507-02	BRACKET,FRAME,VERTICAL	2
90	987507-03	BRACKET,FRAME,HORIZONTAL	2

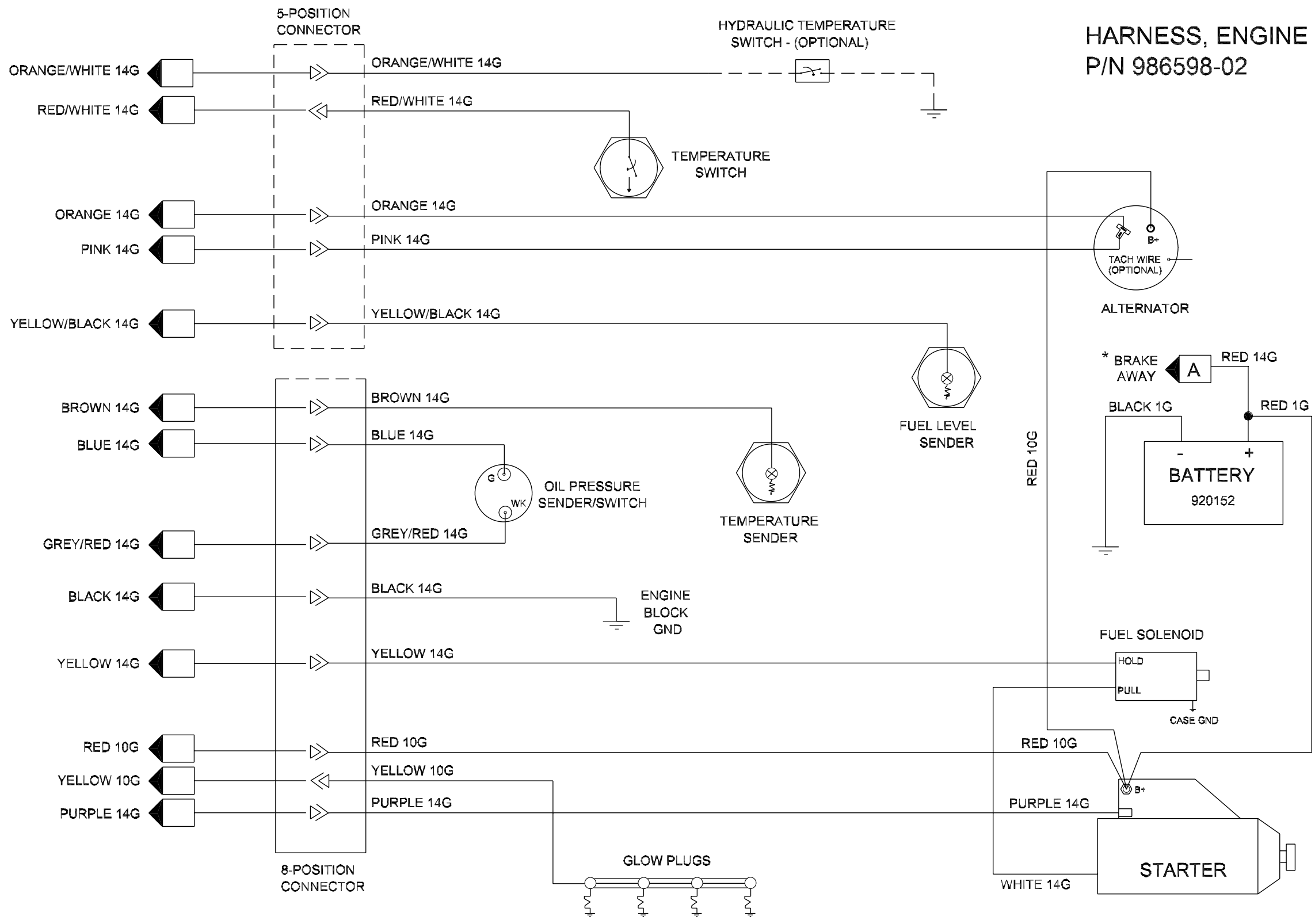
- ITEM NOT ILLUSTRATED



988427 REV. A
ELECTRICAL SCHEMATIC
420 ROLLER

SHEET 1 OF 1

**HARNES, ENGINE
P/N 986598-02**



WIRE HARNESS PLUG LEGEND

PANEL SIDE		ENGINE SIDE	
YELLOW 10G	⊗ ⊙	BLACK 14G	⊗ ⊙
BLUE 14G	⊙ ⊙	YELLOW 14G	⊙ ⊙
BROWN 14G	⊙ ⊙	GREY/RED 14G	⊙ ⊙
PURPLE 14G	⊙ ⊙	RED 10G	⊙ ⊙
PINK 14G	⊗ ⊙	BLACK 14G	⊗ ⊙
ORG/WHT 14G	⊙ ⊙	YELLOW 14G	⊙ ⊙
ORANGE 14G	⊙ ⊙	GREY/RED 14G	⊙ ⊙
BLACK 14G	⊗ ⊙	YELLOW 10G	⊗ ⊙
YELLOW 14G	⊙ ⊙	BLUE 14G	⊙ ⊙
GREY/RED 14G	⊙ ⊙	BROWN 14G	⊙ ⊙
RED 10G	⊙ ⊙	PURPLE 14G	⊙ ⊙
BLACK 14G	⊗ ⊙	PINK 14G	⊗ ⊙
YELLOW 14G	⊙ ⊙	ORG/WHT 14G	⊙ ⊙
GREY/RED 14G	⊙ ⊙	ORANGE 14G	⊙ ⊙

⊙ MALE PIN
⊗ FEMALE PIN

988423 REV. A
ELECTRICAL SCHEMATIC,
KUBOTA ENGINE

SHEET 1 OF 1

* Only Applicable To 400T

