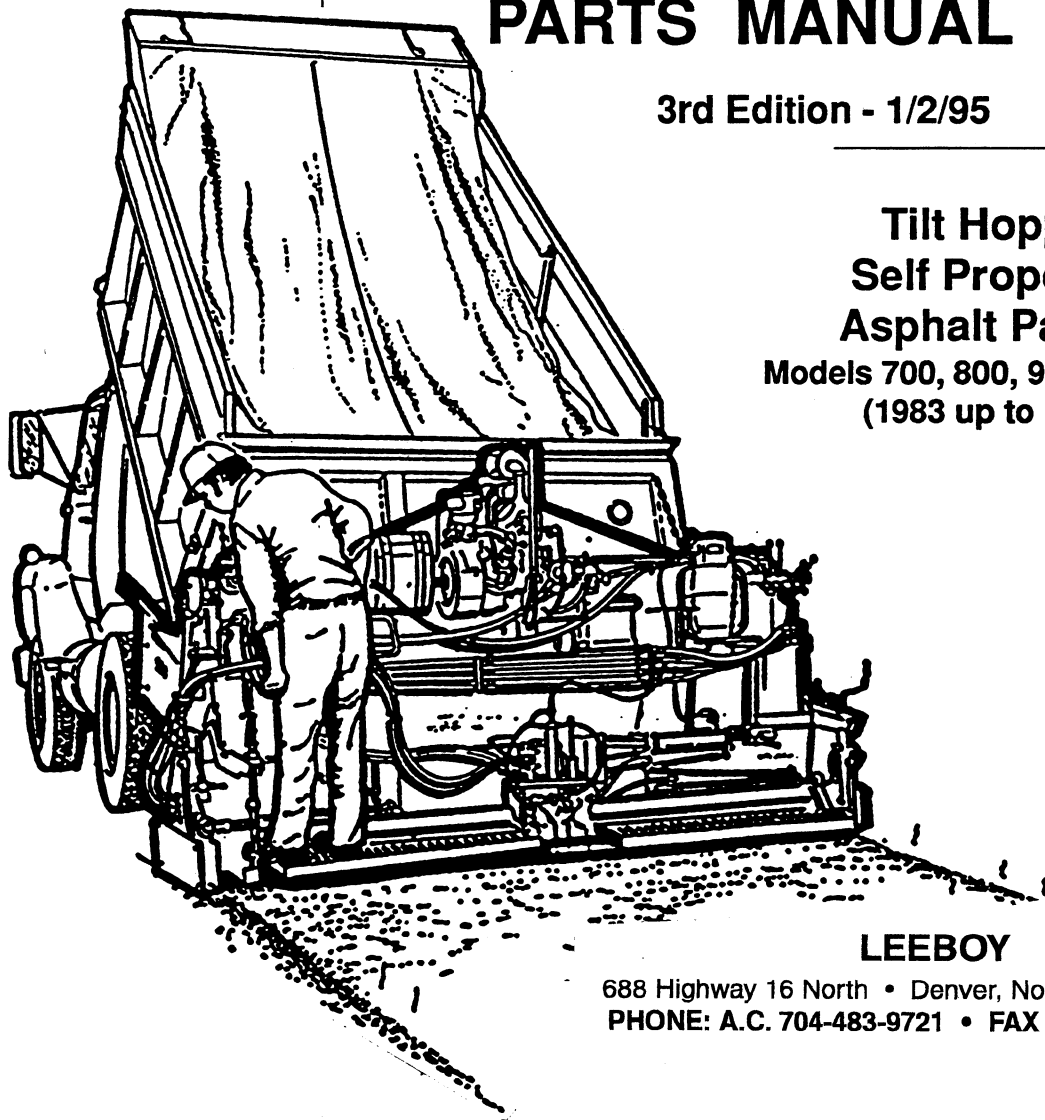


LeeBoy

OPERATION, MAINTENANCE AND PARTS MANUAL

3rd Edition - 1/2/95

**Tilt Hopper
Self Propelled
Asphalt Pavers**
Models 700, 800, 900 and 1000
(1983 up to 1994)



LEEBOY

688 Highway 16 North • Denver, North Carolina 28037
PHONE: A.C. 704-483-9721 • FAX # 1-704-483-5802

USER'S REFERENCE INFORMATION

DELIVERY DATE _____ EQUIPMENT SERIAL NO. _____

TYPE ENGINE _____ ENGINE NO. _____

DEALER'S NAME & ADDRESS _____ EQUIPMENT HOURS _____

LIMITED WARRANTY

B. R. LEE INDUSTRIES, INC. warrants to the original customer that the equipment manufactured by B. R. Lee, Industries, Inc. to whom said equipment is sold as new shall be free from defects in material and workmanship for 90 days after the date of first use or delivery whichever comes first.

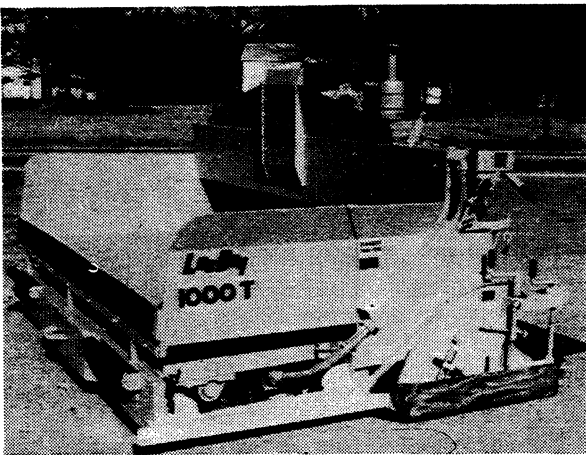
This warranty is limited to the following: If any part of the equipment becomes defective during the period described and is brought to an authorized B. R. Lee Industries, Inc. dealer, the dealer will, without charge, repair the part which has become defective or replace it without charge. B. R. Lee Industries, Inc. is not responsible for damaged or malfunction resulting from misuse, failure to follow recommended maintenance requirements, alteration, accident or fire.

THIS WARRANTY IS IN LIEU OF ALL OTHER WARRANTIES OR REPRESENTATIONS OF ANY KIND WHATSOEVER, EXPRESSED OR IMPLIED, EXCEPT THAT OF TITLE. ACCORDINGLY, ALL IMPLIED WARRANTIES, INCLUDING ANY WARRANTY OF MERCHANTABILITY AND FITNESS FOR A PARTICULAR PURPOSE ARE HEREBY DISCLAIMED. B. R. LEE INDUSTRIES, INC. SHALL NOT BE RESPONSIBLE FOR LOSS OF TIME, LOST PROFITS, LOST USE, OR ANY OTHER CONSEQUENTIAL DAMAGES OR ANY INCIDENTAL DAMAGE.

B. R. Lee Industries, Inc. does not authorize any person to amend or extend this limited warranty on its behalf.

**TILT HOPPER
Asphalt Pavers
OPERATIONS, MAINTENANCE
AND PARTS MANUAL**

**MAJOR SECTION
INDEX**



SECTION

SAFETY PRECAUTIONS AND GENERAL INFORMATION

1

OPERATING CONTROLS

2

LOADING AND UNLOADING

3

OPERATING INSTRUCTIONS

4

ROUTINE MAINTENANCE AND ADJUSTMENTS

5

PARTS & INFORMATIVE DECALS

6

To easily locate the major sections in this manual, the first page of each major section is imprinted with a black square in a position corresponding to the section position listed on this page. To use the rapid index, hold the manual and spread the edges of the pages with the right thumb until the square is located which corresponds to the index position of the section desired. Then open the book. The contents of these sections are listed on the first page of each section.

This manual should be used with all related supplemental books, engine and transmission manuals, and parts books. Related Service Bulletins should be reviewed to provide information regarding some of the recent changes.

If any questions arise concerning this publication or others, contact your local Lee-Boy Distributor for the latest available information.

Contents of this manual are based on information in effect at the time of publication and are subject to change without notice.

IMPORTANT SAFETY INSTRUCTIONS

This manual provides important information to familiarize you with safe operating and maintenance procedures. Even though you may be familiar with similar equipment you **MUST** read and understand this manual before operating this unit.

Safety is everyone's business and is one of your primary concerns. Knowing the guidelines covered in the following paragraphs and in Section 1 will help provide for your safety, for the safety of those around you, and for the paver's proper operation.

LOOK FOR THESE SYMBOLS WHICH POINT OUT ITEMS OF EXTREME IMPORTANCE TO YOU AND YOUR CO-WORKERS' SAFETY. READ AND UNDERSTAND THOROUGHLY. HEED THE WARNING AND FOLLOW THE INSTRUCTIONS.

! DANGER !

You **MUST** follow all **DANGER** safety notes. If you do not follow the instructions, your mistake might likely result in **VERY SERIOUS INJURY** or **DEATH**.

! WARNING !

WARNING safety notes must **ALSO** be followed. Your mistake might result in **SERIOUS INJURY** to yourself or others.

! CAUTION !

CAUTION safety notes are **ALSO** very important. They point out to you where mistakes could cause **PHYSICAL HARM** to you or others, or damage to the machine.

SECTION 1 – SAFETY PRECAUTIONS AND GENERAL INFORMATION

CONTENTS

DESCRIPTION	PAGE	DESCRIPTION	PAGE
1.1 OVERVIEW.....	1-1	1.4 STOPPING.....	1-2
1.2 PRE-START INSPECTION.....	1-2	1.5 MAINTENANCE.....	1-2
1.3 OPERATING.....	1-2	1.6 TRANSPORTING.....	1-3

1.1 – OVERVIEW

Lee-Boy pavers are designed with the paving man in mind. They are tough machines, built with fewer moving parts. You will be pleased with the simplicity and versatility of this machine.

If you have ANY QUESTIONS about the safe use or maintenance of this paver.
ASK YOUR SUPERVISOR or CONTACT ANY LEE-BOY DISTRIBUTOR.
NEVER GUESS – ALWAYS CHECK!

SPECIFICATIONS		
	MODEL 1000	MODEL 900 SUPER
Width (overall)	9'-10"	9'-10"
Width – Paving (lesser width with cutoff gates)	9' to 13'	9' to 13'
Height	5'-4"	5'-4"
Weight	9,000 lbs.	8500 lbs.
Hopper capacity	90 C.F.	90 C.F.
Crown--plus or minus	2"	2"
Screed	9' x 17"	9' x 15"
Screed heat	Propane	Propane
Max. paving depth	6"	6"
Max. paving speed	65 FPM	65 FPM
Travel speed -low range	0-120 FPM	0-120 FPM
-high range	0-170 FPM	0-170 FPM
Engine (std)	Gas, 35 HP @ 3000 RPM	Gas, 35 HP @ 3000 RPM
Drive	Hydrostatic	Hydraulic
Suspension system 1-	48" x 14" steel track	48" x 14" steel track
2-	12 driven rubber tires	12 driven rubber tires
Hydraulic system	Dual pump	Dual pump
OPTIONS		
Murphy Diesel 302-2 35 HP @ 3000 RPM	X	X
Hatz 2L-40S (denoised) 40 HP @ 3000 RPM	X	X
Operator's seat		X

SECTION 1 – SAFETY PRECAUTIONS AND GENERAL INFORMATION

1.2 PRE-START INSPECTION – INSPECT machine. Have any malfunctioning, broken or missing parts corrected or replaced before using. Hydraulic hoses should be checked daily for wear and leaks. Replace if damaged.

INSPECT machine. Have any malfunctioning, broken or missing parts corrected or replaced before use.

CHECK that all the instruction and safety labels are in place and readable. These are as important as any other equipment on the machine.

READ and FOLLOW all instruction decals.

WEAR OSHA required safety equipment when running the paver.

FILL the fuel tank with the engine off. Never fill near an open flame, when smoking or when screed heat is on.

CLEAR auger before starting engine. Check and make sure all covers and guards are in place.

1.3 – OPERATING

ALWAYS make sure no person or object is in your line of travel **BEFORE** starting.

WORK slowly in small areas.

DO NOT run engine in a closed building for long. **NEVER** spray fuel oil on or near screed while it is being heated.

AVOID steep hills if possible. If you have to operate on a slope, travel up or down, not across.

ALWAYS look **BEFORE** changing your direction of travel.

DO NOT pave in high speed range, use it only for travel. Do not attempt to turn machine in high range. Before operating track machine in high range raise the hopper 2-3 inches to prevent excessive vibration.

NEVER open a valve to burner unless a flame is present. Heat screed for no more than 5 minutes. Make sure all valves are closed after burner is turned off.

AVOID leaving engine running without operator present.

1.4 – STOPPING

ALWAYS park the paver on solid, level ground. **IF** this is not possible, always park the paver at a right angle to the slope.

USE proper flags, barriers and warning devices especially when parking in areas of traffic.

1.5 – MAINTENANCE

AVOID working on the paver with the engine running.

NEVER fill the fuel tank with the engine running.

DO NOT change the engine governor settings.

ALWAYS replace damaged or lost decals.

DISCONNECT battery cables when working on the electrical system, or when welding on the unit.

IF battery needs a charge be sure battery charger is off when making connections.

BE SURE the correct battery polarity is observed [negative (-) to negative (-) and positive (+) to positive (+)] when connecting a battery charger or jumper cable.

! DANGER !

NEVER work under hopper without placing safety prop in position. See Figure 1-1.

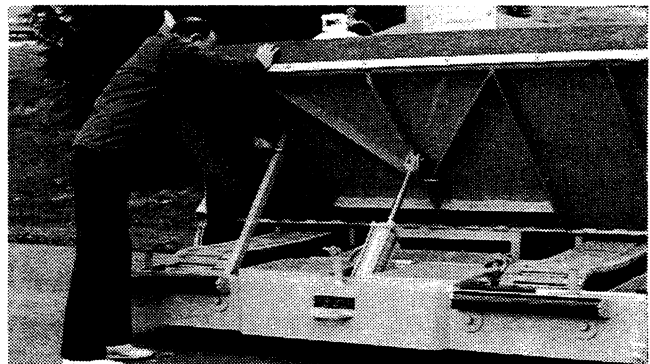


Figure 1-1 – Placing Safety Prop

SECTION 1 – SAFETY PRECAUTIONS AND GENERAL INFORMATION

1.6 TRANSPORTING

DO NOT attempt to load the paver without first becoming familiar with the recommended procedures.

ALWAYS use a ramp to load the paver on the trailer. Be sure ramp is of adequate strength.

Approach loading ramp squarely to make sure the paver does not drop off the side.

CLEAR trailer deck of any material which can become slippery.

USE chock blocks on wheels or tracks of the paver after loading.

ALWAYS know the overall height of the machine and hauling vehicle. Observe height and weight regulations and overhead objects to be sure you can safely pass beneath them.

NEVER transport the paver on a trailer unless it is properly tied down.

SAFETY PRECAUTION

IF YOUR PAVER IS REPAINTED MAKE SURE ALL INSTRUCTION AND SAFETY LABELS ARE REPLACED IN PROPER PLACE AND ARE READABLE! COMPLETE DECAL KITS ARE AVAILABLE FROM YOUR LOCAL DEALER OR THE FACTORY ALONG WITH INSTRUCTIONS FOR PROPER PLACEMENT.

WARNING

PREVENTION OF TRANSMISSION FAILURE

WHEN PAVING OR TAXIING YOUR LEE-BOY PAVER ALWAYS DESTROKE THE HYDROSTATIC TRANSMISSION DRIVE LEVER TO ELIMINATE SUDDEN STOPS OR SUDDEN STARTS WHEN YOU ENGAGE OR DISENGAGE YOUR CONTROL VALVE HANDLES.

WE HAVE FOUND THAT THESE SUDDEN STOPS AND STARTS WITH THE MACHINE RUNNING AT FULL VOLUME PUTS A TREMENDOUS AMOUNT OF PRESSURE ON THE GEAR BOXES' INTERNAL PARTS. HOWEVER, A SMOOTH START AND A SMOOTH STOP WILL ELIMINATE GEAR BOX PROBLEMS.

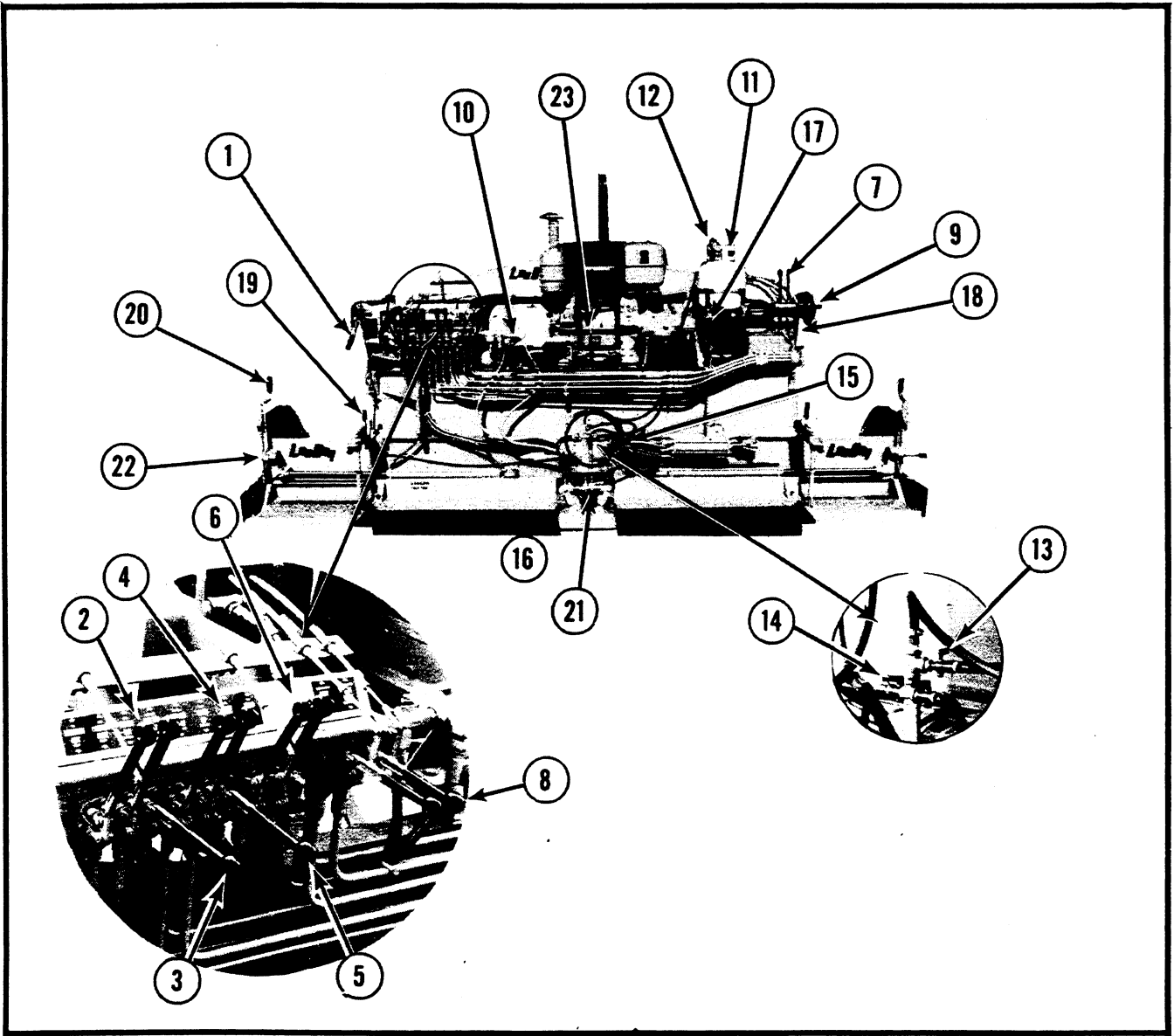
IMAGINE YOUR PAVER WEIGHING 10,000 POUNDS, YOU HAVE 3-5 TONS OF MIX IN THE HOPPER, YOU'RE MOVING FULL VOLUME AT 150-200 FPM, AND YOU HAVE TO STOP OR START ALL OF THIS WEIGHT SUDDENLY WITH YOUR CONTROL VALVE HANDLES... CAN YOU IMAGINE ALL THE PRESSURE ON THE INTERNAL PARTS OF THE TRANSMISSION???

THIS IS WHY IT IS SO IMPORTANT TO DESTROKE THE HYDROSTATIC TRANSMISSION LEVER, AND HANDLE THE CONTROL VALVE HANDLES GENTLY WITHOUT SNATCHING, JERKING, ETC.

CAUSES OF FLIGHT SCREW FAILURE:

1. When loading and unloading, excessive amounts of pressure are put to the back of the screed causing the threads to seize or bearings break. The reason for the design of bearing breakage is to prevent the screed from warping.
TO PREVENT: Adjust the trailer ramps to where the screed does not bottom out.
2. Never turn one flight screw more than 2 to 3 rounds without turning the other one the same distance, unless you loosen the vibrator. If operators are instructed on these operations, their troubles will be eliminated and operations will be smoother.

SECTION 2 – OPERATING CONTROLS



2

MODELS 900 SUPER and 1000

- | | |
|--|--|
| 1. Speed Control Lever (High-Low Range) | 13. Ignitor Valve |
| 2. L & R Screed Extension Control Lever | 14. Burner Valve |
| 3. Screed Up/Down Control Lever | 15. Ignitor |
| 4. Gate Cut-Off Control Levers | 16. Burner (not visible) |
| 5. Hopper Control Lever | 17. Spray Down Pump Switch |
| 6. Auger Control Levers (Left and Right Side) | 18. Wash Down Hose and Nozzle |
| 7. Auger Control Lever (Right Side Only) | 19. Thickness Control Screw |
| 8. Steering Control Levers and Speed Control (900) | 20. End Gate Handle |
| 9. Steering Control Levers and Speed Control (900) | 21. Crown Control Assembly |
| 10. Vibration Control Lever | 22. Tilt Control Handle (Joint Matcher Shoe) |
| 11. Propane Main Valve | 23. Infinitely Variable Speed Control Through Hydrostatic Drive (1000) |
| 12. Propane Pressure Valve | |

SECTION 3 – LOADING AND UNLOADING

CONTENTS

DESCRIPTION	PAGE	DESCRIPTION	PAGE
3.1 GENERAL.....	3-1	3.3 LOADING.....	3-2
3.2 UNLOADING.....	3-1	3.4 TIE DOWN PROCEDURE.....	3-2

3.1 – GENERAL

Trailers used to haul the paver should have ample capacity to carry the weight of the paver. Place the trailer in a clear, level area for loading or unloading.

Work slowly and carefully to avoid accidents. Keep the area clear.

3.2 – UNLOADING

1. Remove tie down equipment.
2. Start and warm up engine.
3. With throttle 1/3 open (for the 900), set speed control lever in low range (handle down). Use steering control levers to swing paver around so that the hopper end faces down the ramp. Operate one lever forward and one lever reverse. Operate engine at full operating rpm for the 1000.
4. Make sure:
 - A. Screed position -- UP.
 - B. Screed extension -- IN.
 - C. Gates (below augers) -- CLOSED.
 - D. Speed Range -- LOW.
5. Move the paver forward down the ramp as shown in Figure 3-1.

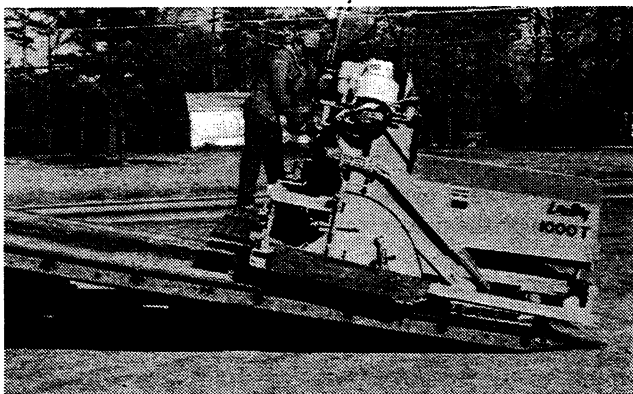


Figure 3-1 – Unloading Paver

⚠ DANGER ⚠

Never move steering levers all the way up or down during unloading. This could allow the paver to free wheel down the ramp and cause serious injury or damage. Operate drive control levers just enough to move paver forward. Free wheeling may be prevented by turning vibration control lever to "on" position.

For the Model 1000, control the speed of the paver by adjusting the speed control lever.

⚠ DANGER ⚠

When shifting the two speed transmission on both the model 900 and 1000, make sure the paver is sitting on level ground. Failure to do so may cause the paver to roll on its own when shifted into neutral. It will then become almost impossible to shift into either high or low range.

⚠ CAUTION ⚠

Do not let screed strike the ground. This can break bearings on thickness control screws and welds on leveling arms. A longer ramp may be necessary to avoid this situation.

If you have a problem unloading the machine – STOP – LOOK – THINK!

SECTION 3 – LOADING AND UNLOADING

3.3 – LOADING

1. Move paver to base of ramp. Make sure paver wheels or tracks are lined up with ramp. Always load paver hopper end first.
2. Make sure:
 - A. Screed position -- UP
 - B. Depth Control handles -- LOCKED.
 - C. Screed extensions -- IN.
 - D. Gates (below auger) -- CLOSED.
 - E. Hopper position -- DOWN.
 - F. Speed Range -- LOW.
 - G. Throttle -- 1/3 Open (900).
 - H. Throttle -- Full Operating RPM (1000).
3. Slowly move drive control levers up (forward on 900) and guide the paver up the ramp as shown in Figure 3-2. On the 1000, control speed by the speed control lever which strokes the pump.

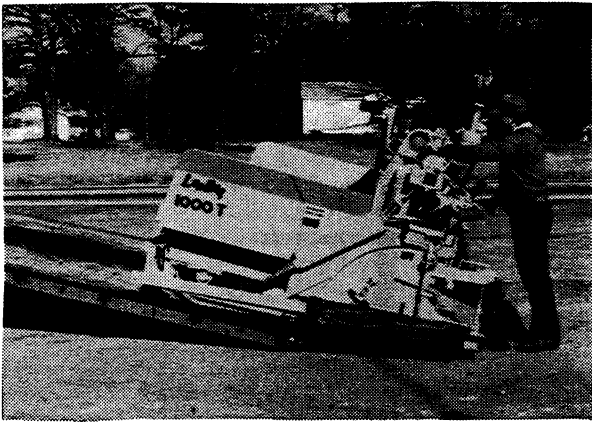


Figure 3-2 – Loading Paver

As paver moves up ramp, step off the screed walkway so that front of paver does not tip up.

4. When paver has reached desired position on transport, turn paver 90° sideways as shown in Figure 3-3. Do this by moving one drive control lever to forward position and other drive control lever to reverse position. This will rotate the paver.

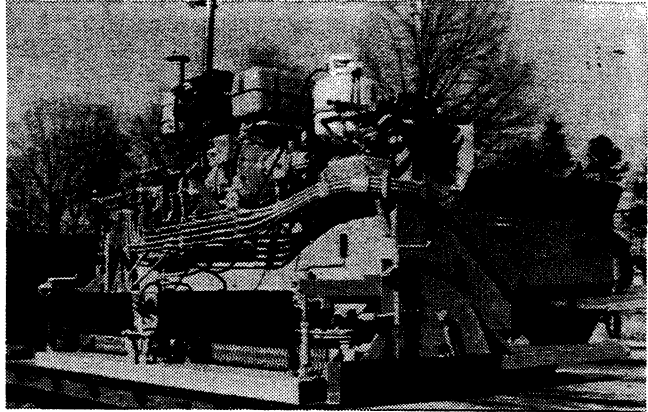


Figure 3-3 – Paver Loaded Position

5. Lower screed to deck and raise walkways on screed to "up" position.
6. Shut down engine.
7. Secure paver to transport as directed by regulations.
8. Always have a helper on the ground who can guide your movements on the transport.

3-4 – TIE DOWN PROCEDURE

1. Position paver on trailer centered from side to side.
2. Attach tie down chain to the hopper end of paver at the center hook provided.
3. On the rear of the machine attach a tie down chain through the crown control frame.
4. Place chocks at wheels or tracks.
5. Make sure all chains are tight before moving.

SECTION 4 – OPERATING INSTRUCTIONS

CONTENTS

DESCRIPTION	PAGE	DESCRIPTION	PAGE
4.1 STARTING THE ENGINE	4-1	4.2.2 GASOLINE ENGINES	4-2
4.1.1 PRELIMINARY	4-1	4.3 SCREED HEAT	4-2
4.1.2 DIESEL ENGINES	4-1	4.3.1 LIGHTING BURNERS	4-2
4.1.3 GASOLINE ENGINES	4-1	4.4 PAVING	4-3
4.2 STOPPING THE ENGINE	4-2	4.4.1 STARTING TO PAVE	4 4
4.2.1 DIESEL ENGINES	4-2		

4.1 – STARTING THE ENGINE

4.1.1 – PRELIMINARY

Before you start the engine:

- A. Check fuel level and check lines and tank for leaks.
- B. Check crankcase oil level.

! CAUTION !

Failure to maintain correct oil level is greatest single cause of engine failures.

- C. Check hydraulic oil level. Oil level should be 2" to 3" below top of tank.
- D. Make sure steering control levers are in neutral (centered). Speed control lever all the way to the right (1000).
- E. Refer to engine operators manual for instructions when starting engine for first time. Follow engine manufacturer's recommendations for fuel and oil.

4.1.2 – DIESEL ENGINES

1. Open throttle halfway.
2. Insert key in ignition switch and turn clockwise (CW) until starter is engaged.

! CAUTION !

Do not operate the starter longer than 30 seconds. If the engine does not start, allow the starter to cool 2-3 minutes before trying again.

The use of starting additives, such as ether, is not recommended.

5. Warm up engine for several minutes before moving paver to warm up hydraulic oil. Paver will be sluggish until hydraulic oil comes up to operating temperature.

4.1.3 – GASOLINE ENGINES

1. Open throttle halfway.
2. Pull choke lever.
3. Insert key in ignition and turn to activate starter. Release key when engine starts and move choke lever to "off" position.

! CAUTION !

Do not operate the starter longer than 30 seconds. If the engine does not start, allow the starter to cool 2-3 minutes before trying again.

For cold weather starting, use starting aids as necessary, however, refer to the engine manual before doing so.

! CAUTION !

Avoid unnecessary engine idling. Extended idling, especially in cold weather, will cause incomplete combustion of fuel and may lead to a shortened engine life.

5. Warm up engine for several minutes before moving paver to warm up hydraulic oil.

Allow the engine to run at idle for a few minutes to stabilize the temperature before stopping. Never stop the engine while under load.



SECTION 4 – OPERATING INSTRUCTIONS

4.2 – STOPPING THE ENGINE

4.2.1 – DIESEL ENGINES

1. Grasp throttle control and move handle to the right (stop position).
2. Turn ignition key counter-clockwise (CCW) to the "off" position and remove.

4.2.2 – GASOLINE ENGINES

Turn ignition key to the "off" position and remove key.

4.3 – SCREED HEAT

4.3.1 – LIGHTING BURNERS

1. Turn main valve on propane tank counter-clockwise (CCW) to "on" position as shown in Figure 4-1.

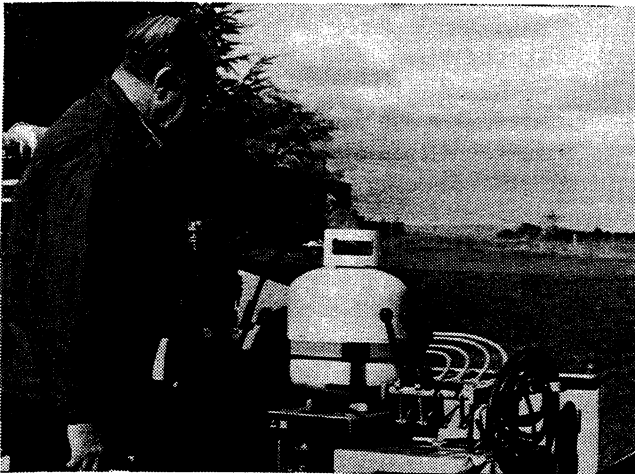


Figure 4-1 – Opening Propane Valve

2. Adjust pressure valve in or out until gauge reads between 6 and 8 pounds as shown in Figure 4-2.

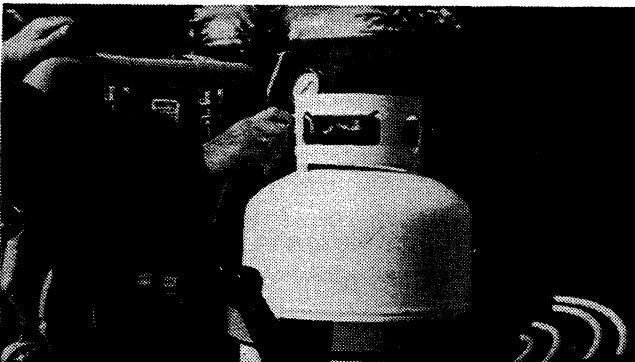


Figure 4-2 – Adjusting Propane Pressure

3. Use a match or cigarette lighter to light ignitor as you open the ignitor valve as shown in Figure 4-3.

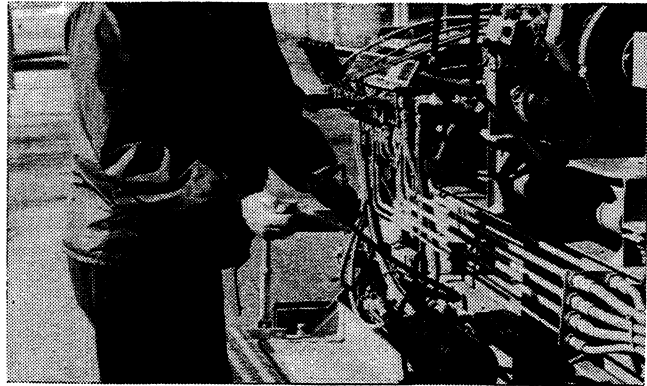


Figure 4-3 – Lighting Ignitor

4. Direct ignitor flame into hole in screed cover and turn burner valve to "on" position. When the burner is lit, follow same procedure for burner on opposite side as shown in Figure 4-4.

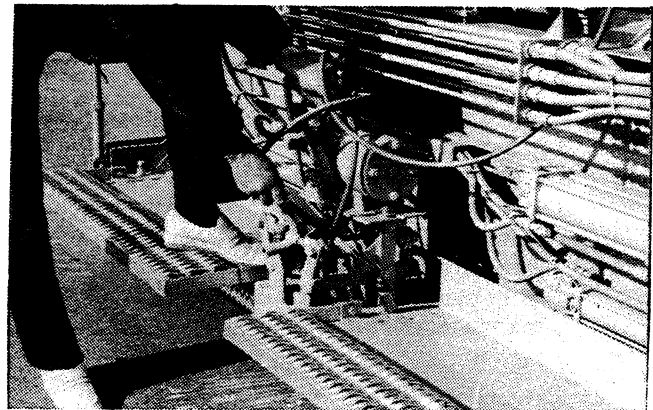


Figure 4-4 – Lighting Burner

! DANGER !

Never open a valve to burner unless flame is present. A build up of unburned gas could result in a GAS EXPLOSION!

5. Heat screed for no more than five minutes before paving.

! CAUTION !

Too much heat for too long can warp screed plate and cause mat texture problems. The screed would then need to be replaced.

SECTION 4 – OPERATING INSTRUCTIONS

4.3 – SCREED HEAT – CONT.

4.3.1 – LIGHTING BURNERS – CONT.

When turning off the burners, make sure that all valves are closed, including the main valve on the propane tank.

Heating the screed helps prevent hot mix from sticking to the cold screed plate and produces a smooth, tight mat surface. Heating should not only be performed at the beginning of the job, but also if the machine is idle for a long time between loads (allowing screed plate to cool).

It may be necessary to keep low screed heat if temperature is below 60°F. and cool breeze is blowing. Adjust pressure valve on tank until gauge reads 2 to 3 lbs.

! DANGER !

Never use wash down hose while burners are lit. A fire could cause serious burns or death!

4.4 – PAVING

Before starting to pave, keep the following points in mind:

- A. Plan the project so that the narrowest passes are paved first. Leaving the widest pass until last (the basic width of the paver or more) permits the operator to maneuver and steer with little trouble.
- B. Make sure to use a reference guideline. This can be a curb, gutter, adjacent mat or a string line. *It is important that the first pass be straight as it will be the guideline for the following passes.* Use the steering gauge as shown in Figure 4-5.

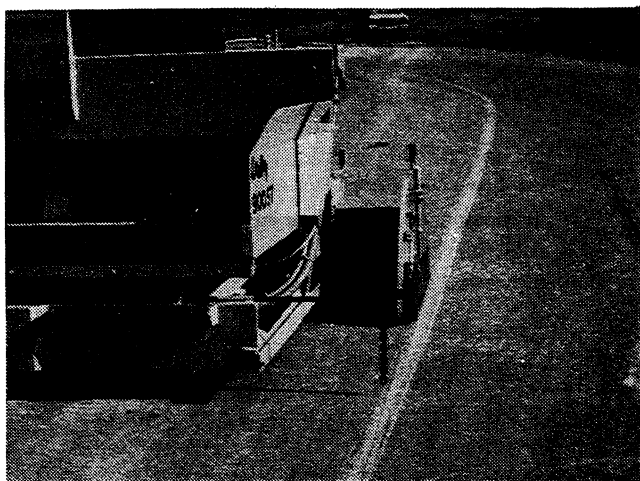


Figure 4-5 – Steering Gauge

- C. Lay first pass without pushing truck. Let truck dump the mix in the hopper then allow truck to move away from paver.

- D. Never run paver through a pile of mix dumped on the roadway. There is always danger of material jamming drive on both rubber and track driven machines and breaking drive chains or pillow block bearings on the suspension system.
- E. It is the operators job to guide the truck up to the paver and signal driver when and how much to dump into hopper. Truck driver must maintain a light pressure on his brakes to keep truck from dumping material on the roadway in front of paver. See Figure 4-6.

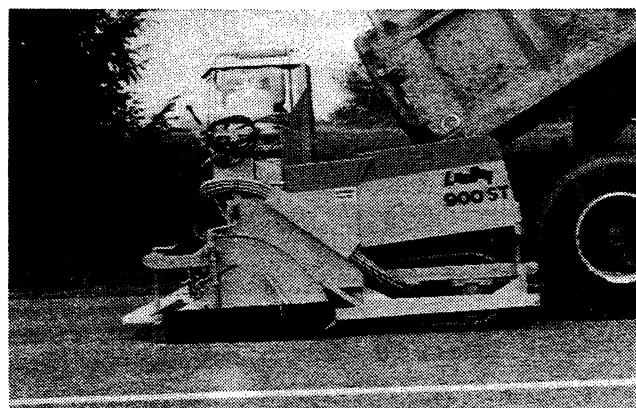


Figure 4-6 – Positioning Truck

- F. Always pave in Low range.

SECTION 4 – OPERATING INSTRUCTIONS

4.4 – PAVING – CONT.

4.4.1 – STARTING TO PAVE

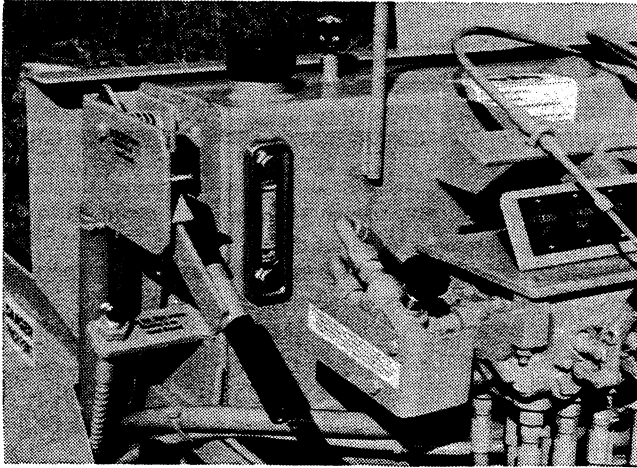


Figure 4-7 – Speed Range - LOW

1. Raise screed and move out left and right extensions. Lubricate screed inserts with fuel oil and run the extensions in and out several times. Make sure end gate depth screw handles are locked after moving extensions to the desired width. Spray the hopper, augers, auger gates and the bottom of the screed plate with fuel oil as shown in Figure 4-8.

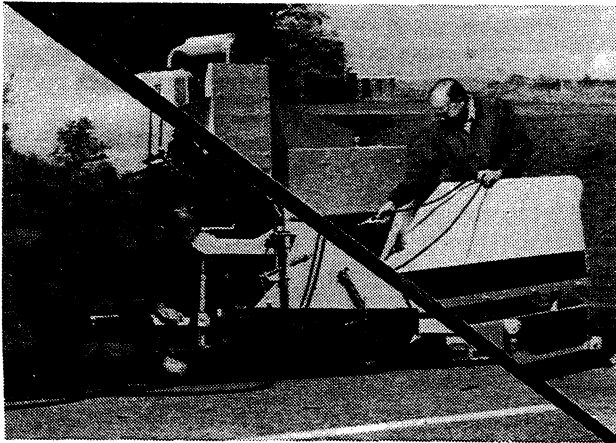


Figure 4-8 – Spraying Fuel Oil

2. Light screed burners. Allow screed to heat for about 5 minutes. After paving a short stretch, turn off screed heat; the mix will keep the screed hot.
3. Move unit into paving position.
4. Place wood blocks under the screed as shown in Figure 4-9. These blocks should be slightly thicker ($\frac{1}{4}$ inch) than the finished (compacted) mat, to allow for reduction in thickness after rolling.

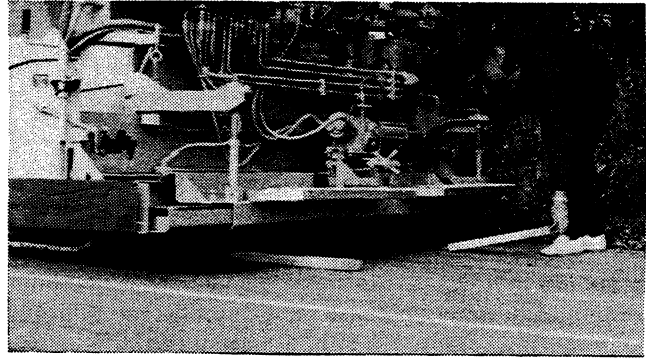


Figure 4-9 – Placing Starting Blocks

5. Lower screed onto starting blocks (See Figure 4-10).

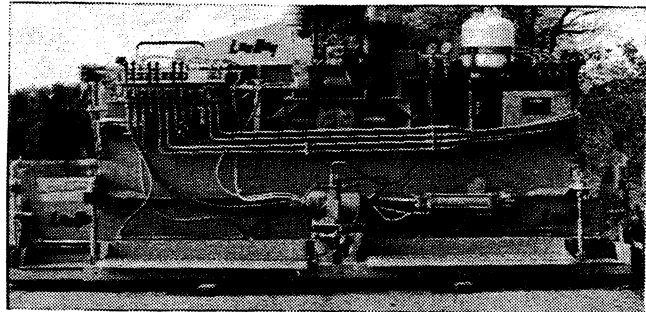


Figure 4-10 – Ready to Pave

6. Turn thickness control screws (both sides) up or down until screed is flat on starting blocks as shown in Figure 4-11 (This will be indicated when the pressure it takes to turn the handle is greatly reduced). Now, turn thickness control screws about one-half turn UP (this may vary slightly with each machine). This will slightly raise the leading edge of the screed. As the paving operation begins and the screed slides off the starting blocks, the resulting mat will be the thickness of the starting blocks. If this slight increase in leading edge angle is not placed in the screed, it will fall as it comes off the blocks and cause an unwanted dip in the mat.

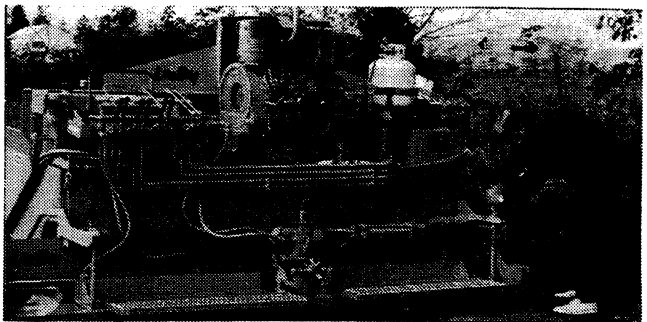


Figure 4-11 – Turning Thickness Control Screw

SECTION 4 – OPERATING INSTRUCTIONS

4.4 – PAVING – CONT.

4.4.1 – STARTING TO PAVE – CONT.

7. Lower bottom of end gate $\frac{1}{4}$ " below screed plate. This will allow for compaction (See Figure 4-12).



Figure 4-12 – Lowering End Gate

Always make sure the depth control handles on the end gate are latched after each use to prevent damage when the extensions are retracted (See Figure 4-13).

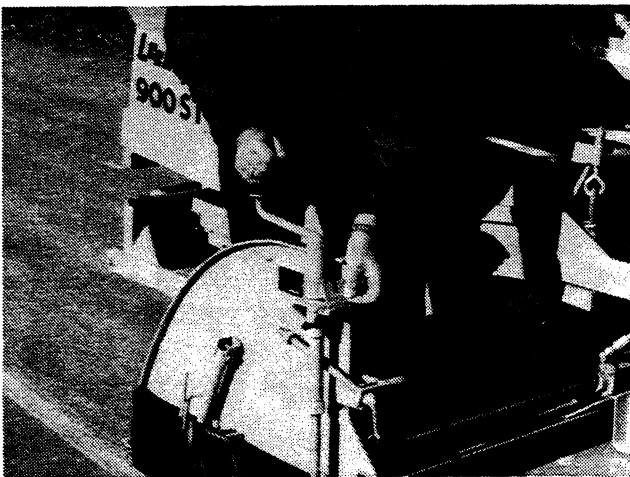


Figure 4-13 – Locking Depth Control Handle

8. Set crown control. The screed plate is a one-piece unit which is actually bent to provide the required crown setting. See Figure 4-14.

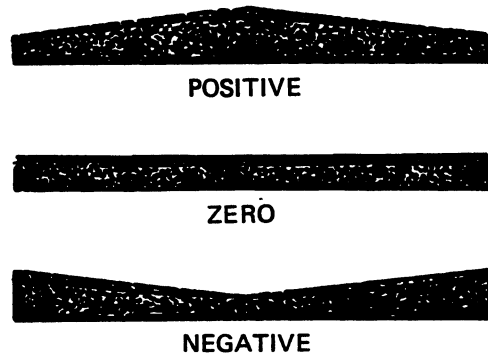


Figure 4-14 – Crown Shapes

Positive crown is when the middle of the mat is raised to permit water to drain to each side.

Negative crown is the lowering of the center of the screed plate. Negative crown might be used in an alley where drainage down the center of the alley is necessary.

Crown may be placed in the leading edge and/or the trailing edge of the screed plate. Crown in the leading edge aids material flow under the screed plate, only. Trailing edge crown puts a crown in the mat. As an example; Trailing edge crown is 0, leading edge crown is $\frac{1}{8}$ ". With this set-up there will not be any crown placed in the mat laid by the paver, however, material flow under the screed plate will be improved. Trailing edge crown is set at 0 when shipped from the factory. The chain connecting the leading and trailing edge crown control assures that the relationship of the two edges remains constant as the trailing edge is changed to meet job conditions.

ADJUSTING CROWN CONTROL:

- A. Loosen nut in slot under vibration motor as shown in Figure 4-15.

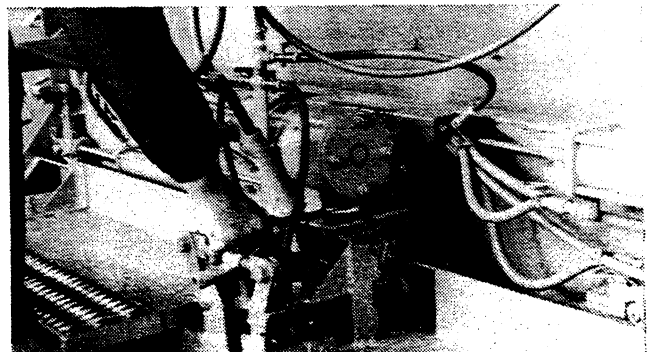


Figure 4-15

SECTION 4 – OPERATING INSTRUCTIONS

4.4 – PAVING – CONT.

- B. Remove crown handle from holder and insert it into opening on control as shown in Figure 4-16.

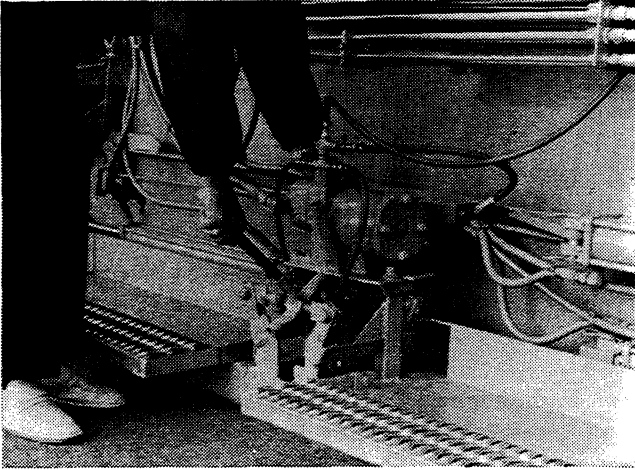


Figure 4-16 – Adjusting Crown

- C. Turn crown control –
-down for positive crown
-up for negative crown

- D. Retighten nut in slot under vibration motor.

If the job demands a specific amount of crown, it can be set by stretching a stringline from one side of the screed to the other (along trailing edge). Turn crown control and measure from the center of screed plate to taut stringline.

NOTE

The only sure way of checking the amount of crown is to check the mat itself as you begin paving.

9. Begin paving the first pass following the guide line.
10. Reverse the paver and return to the starting point for the next pass. The depth control handle on the end gate (on the paved side) should be set so that the bottom of the end plate is about 1/4" below the screed plate.

NOTE

If possible, about 6 inches of the edge of the first pass should be left unrolled to allow a good joint to be made after the next pass is complete.

The second pass can be made with the truck backed up to the front rollers of the paver as shown in Figure 4-17. Raise the hopper to receive asphalt. The paver will push the truck; the driver should hold the truck brakes "on" *lightly* to keep the truck from moving away from the paver.

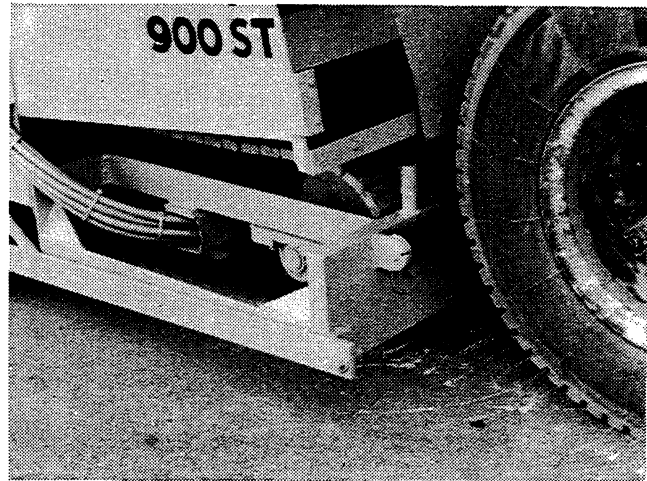


Figure 4-17 – Second Pass

⚠ CAUTION ⚠

Truck driver should not hold brakes too tightly or paver steering and the mat will be adversely affected.

These paving directions are general in nature and cannot take into account unusual characteristics you will find on each job. It is, therefore, the responsibility of the supervisor in charge to determine the exact paving pattern.

SECTION 5 – ROUTINE MAINTENANCE AND ADJUSTMENTS

CONTENTS

DESCRIPTION	PAGE	DESCRIPTION	PAGE
5.1 GENERAL	5-2	5.7 1000 HOUR OR ANNUAL MAINTENANCE	5-4
5.2 10 HOUR OR DAILY MAINTENANCE	5-3	5.8 ADJUSTMENTS	5-5
5.3 50 HOUR OR WEEKLY MAINTENANCE	5-3	5.9 OPERATIONS OF ELECTRIC FLIGHT SCREW	5-6
5.4 100 HOUR OR MONTHLY MAINTENANCE ...	5-4	5.10 USE OF AUGER EXTENSION	5-6
5.5 250 HOUR OR QUARTERLY MAINTENANCE	5-4	5.11 INSTRUCTIONS FOR SELF IGNITING BURNERS	5-7
5.6 500 HOUR OR SEMI-ANNUAL MAINTENANCE	5-4	5.12 AUTOMATIC AUGERS	5-7



SECTION 5 – ROUTINE MAINTENANCE AND ADJUSTMENTS

5.1 – GENERAL

Preventive maintenance on the Lee-Boy paver is a simple job that will guarantee years of trouble-free operation. Adjustments, also, are simple; they can be performed, in the field, with ordinary hand tools. Engine preventative maintenance,

other than oil, air and fuel filter changes, is not covered in this section. Refer to engine operators manual for engine service information.

5.2 – 10 HOUR OR DAILY ROUTINE MAINTENANCE

1. The major service required on your Lee-Boy paver is keeping the machine clean. At the end of each day's work while the paver is still hot, all asphalt should be removed. Asphalt deposits can be dissolved by spraying them with fuel oil. This should be done before the asphalt hardens. Scrape off all large deposits.

⚠ CAUTION ⚠

If mix is allowed to remain in the machine overnight, possible damage could result on start-up the next day. Poor "housekeeping" will increase maintenance costs.

2. Fill tanks for engine fuel tank and the spray down system to keep condensation from forming.
3. Perform engine preventative maintenance as described in your engine operators manual. Any engine preventative maintenance should always begin with an oil check. Also, check oil level in oil bath air cleaner.
4. There are three grease fittings that should be greased daily with a good grade of multi-purpose grease. Two fittings are on the outside ends of each auger as shown in Figure 5-1.

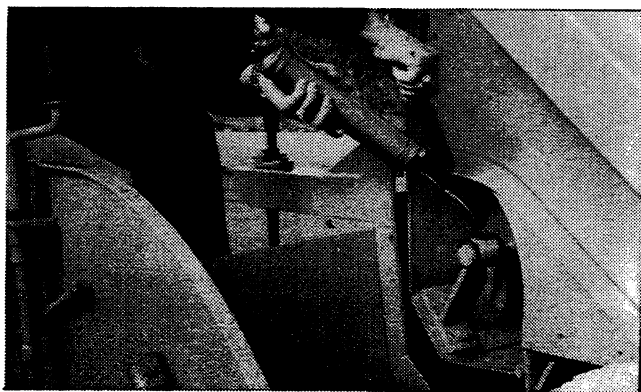


Figure 5-1—Auger Grease Fittings

The center auger bearings are sealed for life.

The third grease fitting is on the extension slide, on the right side of the paver, behind the screed hoist cylinder as shown in Figure 5-2.

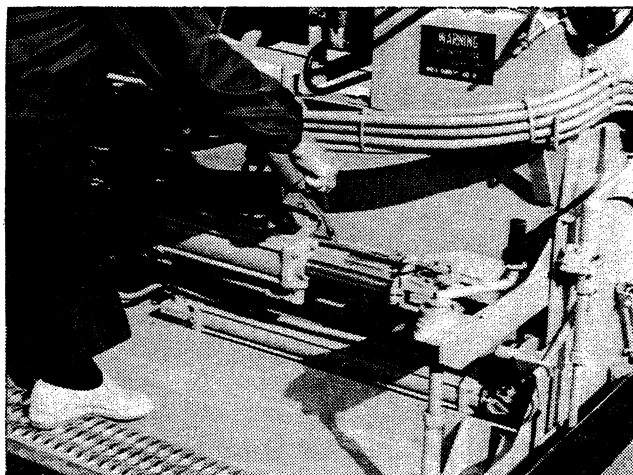


Figure 5-2—Extension Grease Fitting

Grease these fittings at the end of the day while the machine is still hot. This permits the bearings to be flushed of any asphalt or fines that may have worked into them.

5. Spray thickness control screws with fuel oil to keep them working smoothly.

SECTION 5 – ROUTINE MAINTENANCE AND ADJUSTMENTS

5.2 – 10 HOUR OR DAILY ROUTINE MAINTENANCE – CONT.

- Grease extension slide with multi-purpose grease or spray with fuel oil at points shown in Figure 5-3.

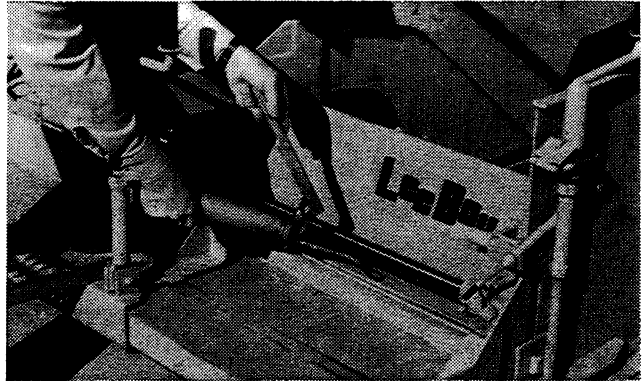


Figure 5-3—Extension Slide Lube

5.3 – 50 HOUR OR WEEKLY ROUTINE MAINTENANCE

- Check hydraulic oil and add if necessary.

CAUTION

Your paver's hydraulic system requires clean, contaminant-free oil. Take extra care when working with the hydraulic system to insure its complete cleanliness.

- Check that battery electrolyte level is to the full indicator and add clean distilled water, if required. Use a battery hydrometer to measure specific gravity in each cell. A fully charged battery will read 1.265 specific gravity at 80° F. (27° C.). At the same time check all battery connections and remove any corrosion that is present.

DANGER

Do not smoke when observing battery electrolyte level. The fumes can explode. Electrolyte is an acid which can burn if it contacts skin or eyes. If contact is made, flush area immediately with water.

- Check air cleaner, if the engine is equipped with a dry type element. Improperly serviced air cleaners wear out engines ——— FAST! In just a few hours a small amount of dirt will wear out a set of piston rings!

Refer to your engine's operators manual for service information. Also perform any other engine preventative maintenance as described in the engine operators manual.

- Clean screed insert. Remove screed insert by disconnecting extension cylinder and then pulling the screed straight out. See Figure 5-4.

Remove asphalt that has accumulated inside screed.

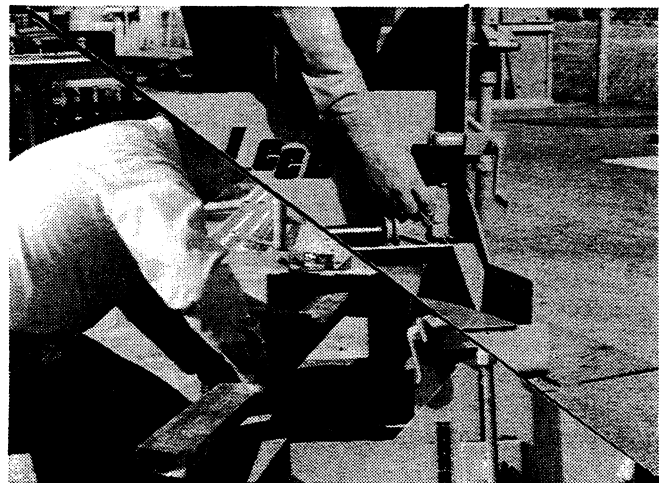


Figure 5-4—Screed Insert Removal

SECTION 5 – ROUTINE MAINTENANCE AND ADJUSTMENTS

5.4 – 100 HOUR OR MONTHLY ROUTINE MAINTENANCE

1. Check oil level in the two transmission gear boxes as shown in Figure 5-5.



Figure 5-5—Gear Box Oil Level

There is a dipstick provided to check oil level.

2. Replace dry type air filter, if equipped. Refer to your engine operators manual for service information.
3. Change engine oil. To assure complete removal of contaminants in the oil, perform the oil change while engine is warm.

After draining used oil, clean and reinstall drain plug and fill crankcase to the full mark with manufacturer's recommended oil. Change oil filter at every other oil change.

4. Change oil in oil bath air cleaner and rinse filter element in clean fuel to remove impurities. Also, perform any other engine preventative maintenance as described in the engine operators manual.
5. Check and adjust all chains, as required.

5.5 – 250 HOUR OR QUARTERLY ROUTINE MAINTENANCE

Perform the 250 hour preventative maintenance as described in the engine operators manual.

1. Change filter on hydrostatic suction between tank and pump.
2. On the Model 1000, replace the filter on the hydrostatic drive loop.

5.6 – 500 HOUR OR SEMI-ANNUAL ROUTINE MAINTENANCE

1. All bearings are sealed and have grease fittings. These should be greased with multi-purpose grease using a hand gun. Be careful to avoid blowing the seals.
2. Perform the 500 hour preventative maintenance as described in the engine operators manual.

5.7 – 1,000 HOUR OR ANNUAL ROUTINE MAINTENANCE

1. Drain and flush the hydraulic tank. A drain plug is located on the bottom of the tank for this purpose. At the same time, unscrew the filter from the lines on the lower end of the tank; clean the filter in non-flammable solvent and replace. Some recommended brands of hydraulic oil are:
 - A. Exxon – Terrestic 43 or Nuto 43
 - B. Gulf – Harmony 44 or Gulfcrest 44
 - C. Phillips – Magnus 150
 - D. Shell – Turbo 25
 - E. Texaco – Regal A-R&O
 - F. Union – Unax - RX-150
2. Perform the 1,000 hour preventative maintenance as described in the engine operators manual.
3. On the Model 1000, replace the filter on the hydrostatic drive loop.
4. Anytime the paver has been repainted and the decals removed, damaged or are unable to be read, a new set of decals should be ordered and reinstalled for safe operation.

SECTION 5 – ROUTINE MAINTENANCE AND ADJUSTMENTS

5.8 – ADJUSTMENTS

5.8.1 – TRACKING ADJUSTMENT

If the machine does not run straight, the torque limiter (item No. 212 - Parts book, page 8) needs adjustment. Loosen the torque limiter setscrews and tighten the adjusting nut hand tight, then tighten it $\frac{1}{4}$ turn (90°) more. Place a 2" X 4" board under the right side of the machine and drive over it. If the machine veers away from a straight line, tighten torque limiter nut another $\frac{1}{4}$ turn (90°) and drive over board again. This is a trial and error method. Continue tightening torque limiter nut $\frac{1}{4}$ turn (90°) each time until the machine will hold a straight course while running over the board. See Figure 5-6.

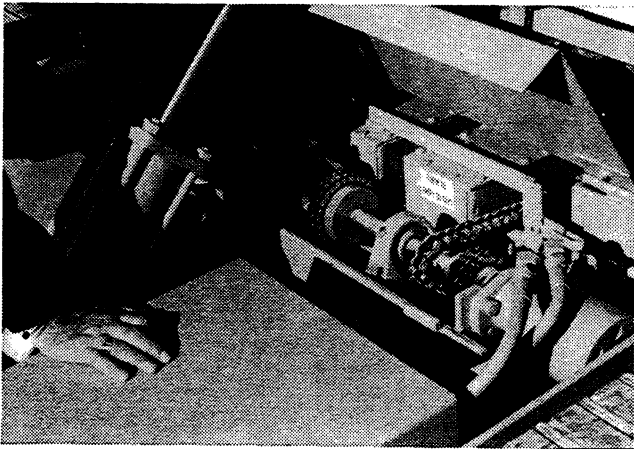


Figure 5-6—Tracking Adjustment

5.8.2 – AUGER CHAIN ADJUSTMENT

The auger chains should be just snug, not loose. Loosen bolts in slots provided for takeup as shown in Figure 5-7.

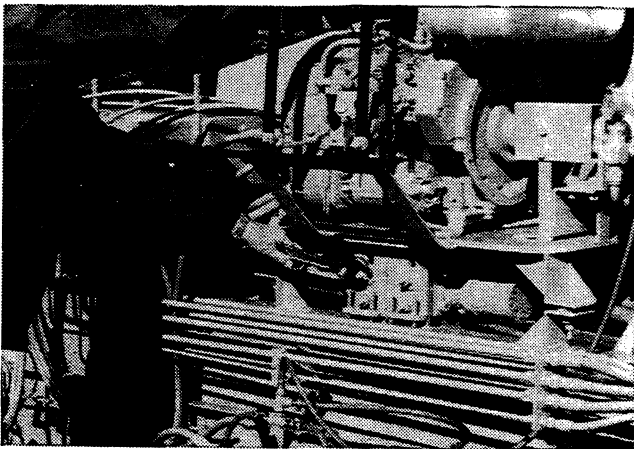


Figure 5-7—Auger Chain Adjustment

Use a wrench to turn the bolts in the tensioner down, tightening the chain. Reach in and feel the chain; if it is snug, retighten the lock bolts.

! DANGER !

Never work under hopper without placing safety prop in position.

5.8.3 – DRIVE ADJUSTMENT

Tracks or chains on rubber tire assemblies may be taken up through the adjustment on the front frame of the paver. To adjust crawlers, lay a straightedge on top of the track as shown in Figure 5-8.

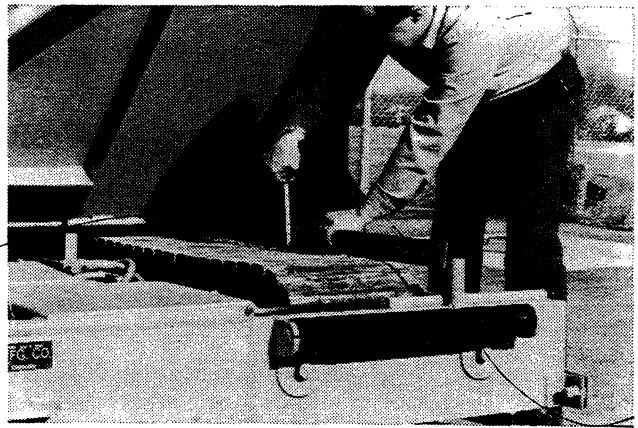


Figure 5-8 – Track Adjustment

Measure the sag as shown. If sag is more than $\frac{1}{2}$ inch, adjust the takeup. On rubber tire paver, measure sag on the drive chains. After taking up the slack make sure that the idler shaft is not cocked. Measure distance from shaft to front frame. Both measurements should be equal; if they are not, readjust. See Figure 5-9.

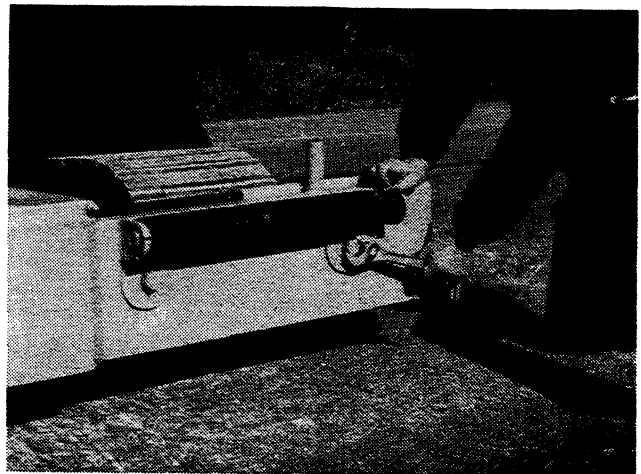


Figure 5-9—Drive Adjustment

SECTION 5 – ROUTINE MAINTENANCE AND ADJUSTMENTS

5.9 OPERATION OF ELECTRIC FLIGHT SCREW

GENERAL

The electric flight screw is an added convenience to the operator, this will provide easier control of both sides of the screed.

1. Before paving, center the electric flight screw on both sides of the paver. See figure below.
2. While paving, use the electric flight screws to make minor adjustments.

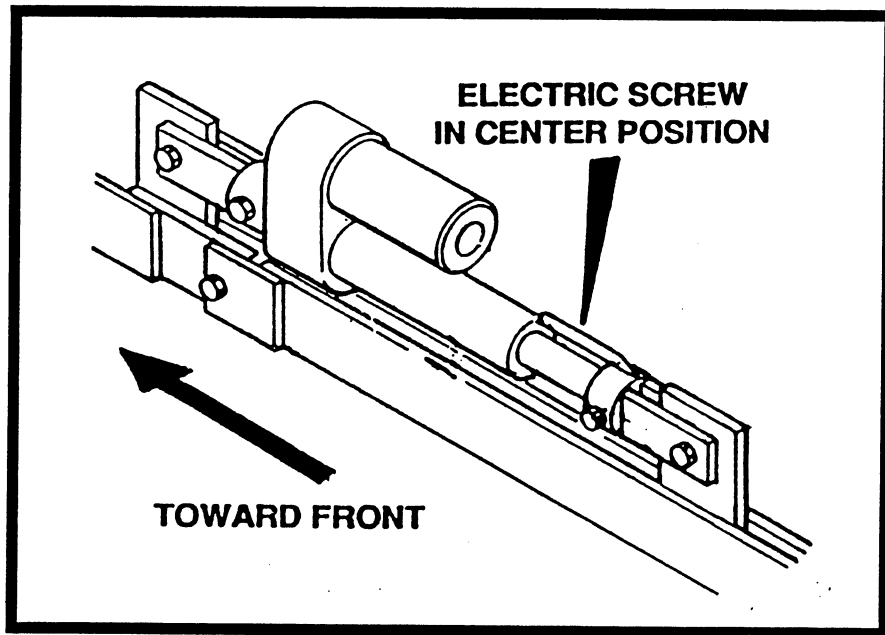


FIGURE 5-10

5.10 USE OF AUGER EXTENSIONS

GENERAL

The auger extensions should be attached to the main auger to increase the flow of asphalt. This will make it possible to lay asphalt at a higher rate. See auger extension attachment instruction.

1. Identify the right and left auger extensions by looking for the L or R on the end of the auger extension shaft.
2. After identifying the right and left auger extension, extend the screed extension fully.
3. Shut off engine.
4. Remove bolt; nut cap on end of the main auger. Attach the correct side auger extension to the main auger with hardware just removed. Repeat this procedure for opposite side.

SECTION 5 – ROUTINE MAINTENANCE AND ADJUSTMENTS

5.11 INSTRUCTIONS FOR SELF-IGNITING BURNERS

1. Set the Propane regulator to 8 to 10 pounds.
2. Turn both Burner Valves on before turning the propane tank on.
3. Press the Preheat button in dash for 5 seconds.
4. After 5 seconds flip Burner Toggle on and the Burners should light.
5. If both Burners do not ignite, repeat process over, after waiting 5 minutes for the propane to clear.
6. When the screed starts laying a smooth matt, turn the Burner Toggle to off and the asphalt will keep the screed heated.
7. Turn the propane bottle to off at the end of the day for safety.

5.12 AUTOMATIC AUGERS

1. The Paddles must be fastened on the end gates, when wanting to use the Automatic Augers. The cords plug into the junction box on the rear of the machine. The toggles on the dash must be turned on for paddles to work.
2. The extension has got to be out at least six inches (6") for the Automatic Augers to work. (If the extension is pulled in with the paddle on the end gate, damage will occur to the paddles.)
3. Adjust the paddles to where the Augers cut on and off at the desired location.
4. Adjustments can be made by sliding the paddles up and down, also by adjusting at the switches.
5. Plug the wires in the junction box and be sure cords are run so that the screed arms will not damage.
6. Do not let the paver set for a long period of time with the augers on automatic. Turn the main auger control handles off while waiting.
7. **WARNING:** Never try to bring the extensions all the way in without taking the paddles off. * If you disregard this warning, you will destroy the paddles.

SECTION 6 PARTS

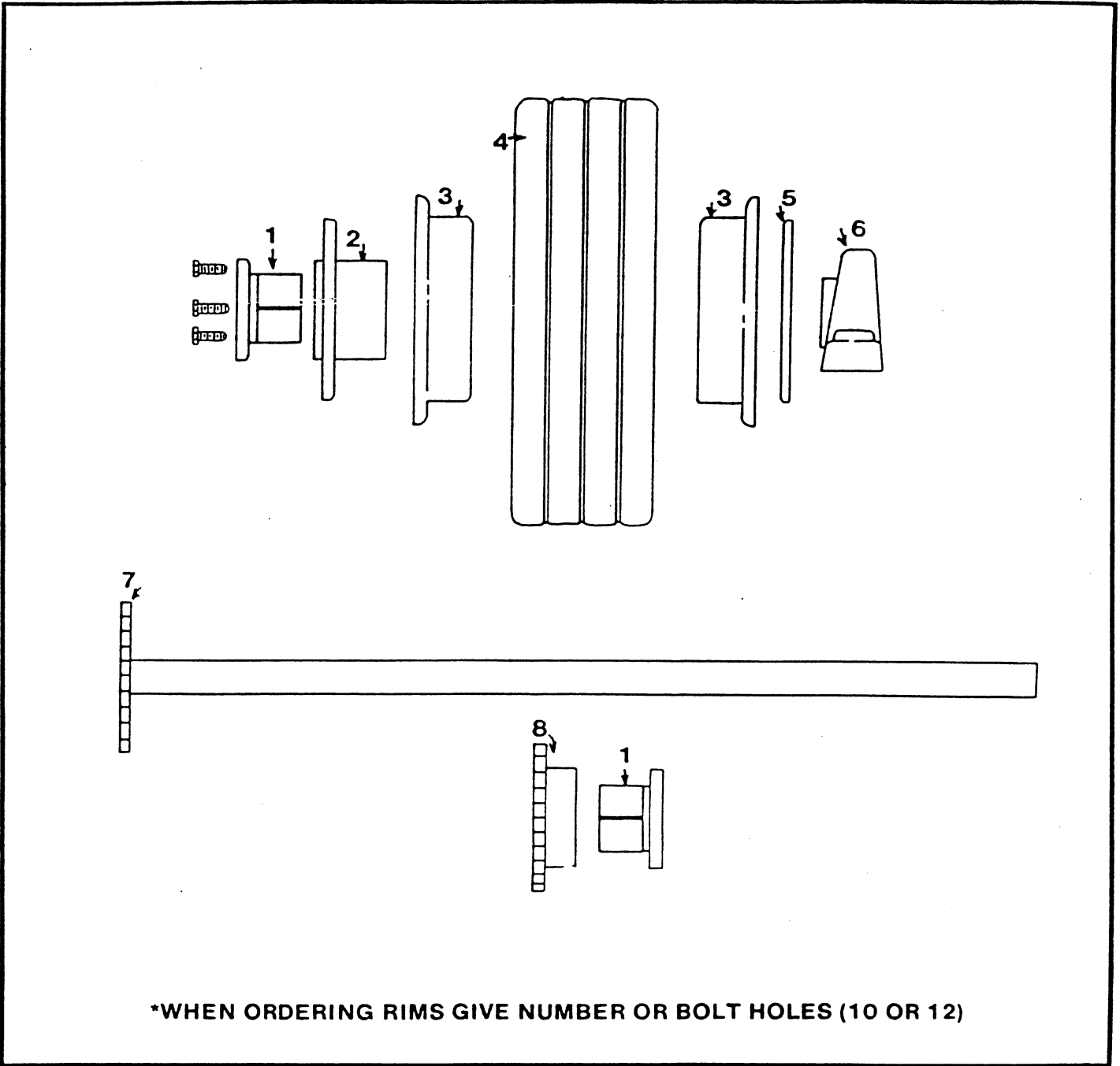
CONTENTS

DESCRIPTION	PAGE	DESCRIPTION	PAGE
6.1 REAR AXLE ASSEMBLY	6-2 & 6-3	6.10 HYDRAULIC ASSEMBLY	6-20 & 6-21
6.2 FRONT AXLE ASSEMBLY	6-4 & 6-5	6.11 PROPANE HEATER ASSEMBLY	6-22 & 6-23
6.3 TRACK ASSEMBLY	6-6 & 6-7	6.12 ACCESSORIES	6-24 & 6-25
6.4 DRIVE MOTOR ASSEMBLY	6-8 & 6-9	6.13 SEAT, GUIDE BAR & CABLE ASSEMBLIES	6-26 & 6-27
6.5 TRANSMISSION ASSEMBLY	6-10 & 6-11	6.14 OTHER PARTS NOT SHOWN	6-28 & 6-29
6.6 AUGER & BACK ASSEMBLY	6-12 & 6-13	6.15 ENGINE & PUMP COMPONENTS ...	6-30 & 6-31
6.7 SCREED ASSEMBLY	6-14,6-15 & 6-16	6.16 SAFETY DECALS & INFORMATIVE DECALS	6-32 & 6-33
6.8 VIBRATOR ASSEMBLY	6-17		
6.9 JOINTER ASSEMBLY	6-18 & 6-19		

NOTE: (Dealers Only)

If customer has a 1000B 8' or 9' refer to manual #1000294 for parts. If customer does not have a B model manual order him one for further references.

SECTION 6 – PARTS



*WHEN ORDERING RIMS GIVE NUMBER OR BOLT HOLES (10 OR 12)

REAR AXLE ASSEMBLY

ITEM NO.	CURRENT PART NO.	DESCRIPTION	QTY	ITEM NO.	CURRENT PART NO.	DESCRIPTION	QTY
1	900101	Q1-2 Bushing	5	9	900109	Keys for Axle	5
2	900102	Hub	4			Later Models With 2 1/4" Axle	
3	900103	*Rim Half	8	10	900110	Casted Rim Complete 8 Holes	4
4	900104	5X8 Super Soft Solid Tire	4	11	900111	5X8 Monarch (Lug)	4
5	900105	Plate Flange	4	12	900112	2 1/4" Pillowblock	2
6	900106	2" Pillowblock Bearing	2	13	900113	Q2-2 1/4" Bushing	5
7	900107	Rear Axle 2" 42"	1	14	900114	2 1/4" Axle 42"	1
8	900108	80A22 Sprocket	1				

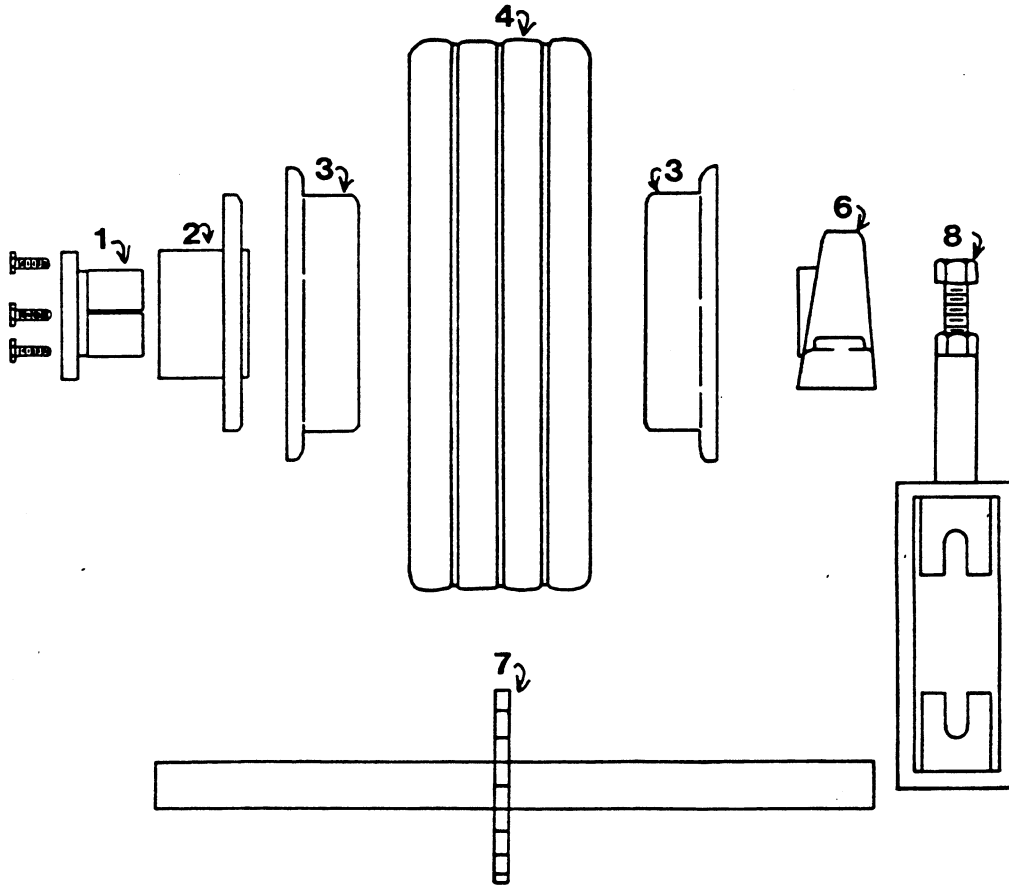
REAR AXLE ASSEMBLY



ITEM NO.	PART NO.	DESCRIPTION	QTY.
1	900101	Q1-2 Bushing	4
2	900102	Hub (N/A) (When ordering this part use part #900110)	4
3	900103	Rim Half (N/A) (When ordering this part use part #900110)	4
4	900104	Super Soft Solid Tire (5" x 8" x 18")	4
5	900105	Plate Flange (N/A)	
6	900106	2" Pillowblock Bearing (When ordering this part use part #810190)	2
7	900107	Rear Axle 2" x 42"	1
8	900108	Sprocket (80Q22) (When ordering this part use part #820150)	1
9	900109	Keys for Axle	5
		LATER MODELS WITH 2 1/4" AXLE	
10	900110	Casted Rim Complete 8 Holes (Not Shown)	4
11	900111	Monarch (Lug) 5" x 8" x 18"	4
12	900112	2 1/4" Pillowblock (When ordering this part use part #810140)	2
13	900113	Q2-2 1/4" Bushing (When ordering this part use part #810160)	5
14	900114	2 1/4" Axle 42" (Rear)	1
15	900115	Lug Tire (Molded)	4
16	900116	Transfer Chain (#80)	1
17	900307	2" x 36" Axle 8' (Rear)	1
18	810172	2 1/4" x 36" Axle 8' (Rear)	1
		NOTE: 8' Models do not require same quantities.	

SECTION 6 PARTS

6.2 FRONT AXLE ASSEMBLY



NOTE: WHEN ORDERING RIMS USE PART # 900110

FRONT AXLE ASSEMBLY

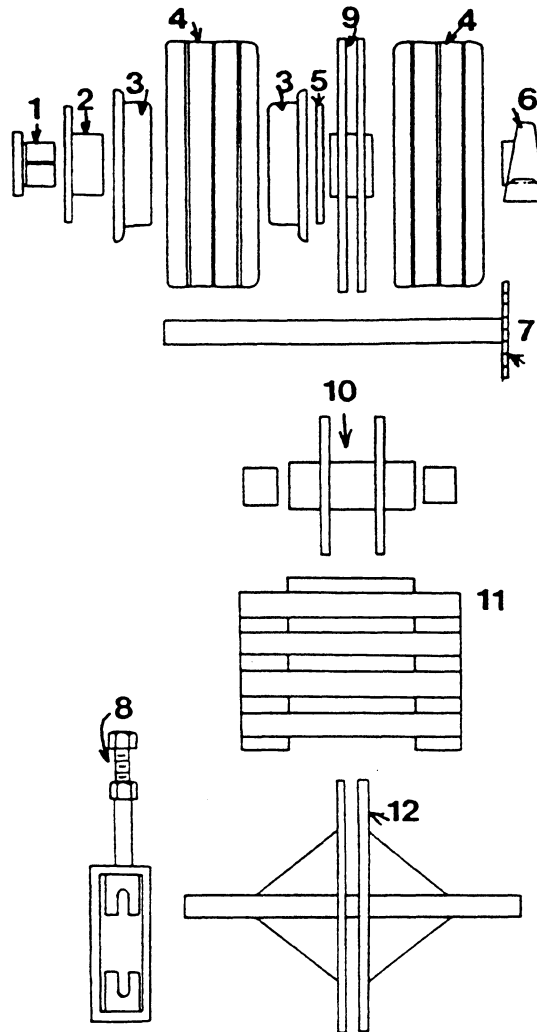


ITEM NO.	PART NO.	DESCRIPTION	QTY.
1	900201	Q1-2 Bushing (When ordering this part use part #900101)	2
2	900202	Hub (N/A) (When ordering this part use part #900110)	2
3	900203	Rim Half (N/A) (When ordering this part use part #900110)	2
4	900104	5" x 8" x 18" Super Soft Solid Tire	2
5	900205	Plate Flange (N/S) (N/A)	
6	900206	2" Pillowblock Bearing (When ordering this part use part #810190)	2
7	900207	Front Axle	1
8	900208	Chain Adjuster	2
LATER MODELS			
9	900110	Casted Rim (N/S)	2
10	900111	Monarch Lug 5" x 8" x 18" (N/S)	2
11	900115	Lug Tire (Molded) (5" x 8" x 18") (N/S)	2
12	900109	Keys 1/2" (N/S)	2

SECTION 6 PARTS

6.3 TRACK ASSEMBLY

NOTE: FIND OUT AXLE SIZE 2" OR 2 1/4" BEFORE ORDERING TRACK GUIDES, BUSHINGS, AXLES, OR BEARINGS.



SERIAL NUMBER REQUIRED!

NOTE: WHEN ORDERING RIMS USE PART # 900110

TRACK ASSEMBLY

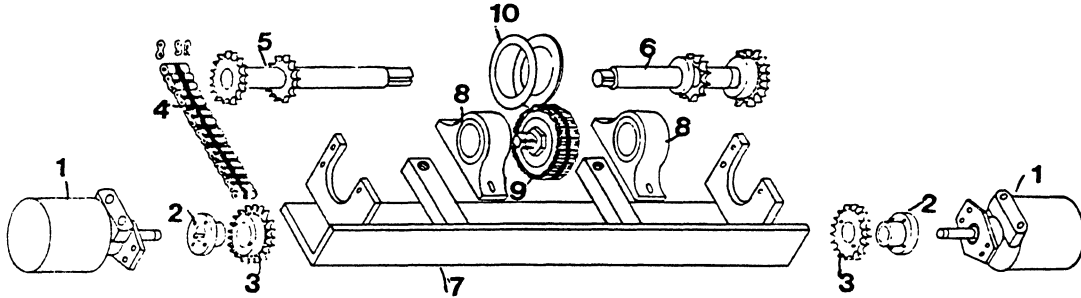


ITEM NO.	PART NO.	DESCRIPTION	QTY.
1	900301	Q1-2 Bushing (When ordering this part use part #900101)	2
2	900302	Hub (N/A) (When ordering this part use part #900110)	(A/R)
3	900303	Rim Half (N/A) (When ordering this part use part #900110)	(A/R)
4	900304	4 x 8 Super Soft Solid Tire	2
5	900305	Plate Flange (N/A)	
6	800106	2" Pillowblock Bearing (When ordering this part use part #810190)	2
7	900307	Rear Axle 2" x 36"	1
8	900308	Chain Adjuster (When ordering this part use part #900208)	2
9	900309	Rear Track Guide 2"	1
10	900310	Center Roller (When ordering this part use part #810272)	1
11	900311	Track (When ordering this part use part #810015)	1
12	900312	Front Idler 16" (When ordering this part use part #810261)	1
13	900113	Q2-2 1/4" Bushing (N/S) (When ordering this part use part #810160)	2
14	900110	Casted Rim Complete (N/S)	2
15	900112	2 1/4" Pillowblock (N/S) (When ordering this part use part #810140)	2
16	900313	Rear Axle 2 1/4" x 36 (N/S) (When ordering this part use part #810172)	1
17	900314	Rubber Track Guards Long (N/S) (When ordering this part use part #810020)	2
18	900315	Rubber Track Guards Short (N/S)	2
19	900316	Molded Tire (5" x 16") (When ordering this part use part #810129)	2
20	900317	Monarch Ribbed Tire (N/S)	2
21	810291	Pins, Track (N/S)	(A/R)
22	800111	Rear Track Guide 2 1/4"	1
23	900319	Track Sections (3 1/2" x 7")	(A/R)
24	900320	Track Sections (3" x 8")	(A/R)
25	900321	Track Sections (2 3/4")	(A/R)
26	810281	Track Sections (2 1/4" x 3 1/2")	(A/R)

SECTION 6 PARTS

6.4 DRIVE MOTOR ASSEMBLY

NOTE: WHEN ORDERING ITEM NO. 9 TORQUE LIMITER, NEED TO KNOW IF BORE IS 1" X 1" (OLDER MODELS) OR 1" X 1-1/4" (NEW MODELS) — (1" X 1" USE PART NO. 900409) (1" X 1-1/4" USE PART NO. 900424)



JACKSHAFT, Left (1 1/4") 900414

***Note: To determine which jackshaft you need, stand at operator's platform (To your right would be your R/H jackshaft and to your left would be your L/H jackshaft* (8000 Pavers with serial #158 up to #265) (All Tilt Hopper Pavers with serial #609 and above with motor drives.)**

JACKSHAFT, Left (1") 900406

*** Note: To determine which jackshaft you need, stand at operator's platform (To your right would be your R/H jackshaft and to your left would be your L/H jackshaft* (8000 Pavers with serial #102 thru #157) Tilt Hopper Pavers with Serial #355, #357 thru #608)**

*** Note: 8000 Pavers with serial #158 and above use part #900414) All Tilt Hopper Pavers with serial #609 and above use part #900414)**

JACKSHAFT, Right (1") 900405

*** Note: To determine which jackshaft you need, stand at operator's platform (To your right would be your R/H jackshaft and to your left would be your L/H jackshaft* Used on Tilt Hopper Pavers with serial #355, 357 and above with motor drives) (Used on 8000 models with serial #102 thru #265)**

NOTE: (1) WHEN ORDERING HYDRAULIC MOTORS, NEW MOTORS HAVE 1 1/4" SPLINE SHAFTS, MUST HAVE PART # 900425 ALSO. (2) WHEN ORDERING ITEM 3, MUST KNOW IF (1") KEYED, 1" 6 SPLINE OR 1 1/4" SPLINE.

DRIVE MOTOR ASSEMBLY

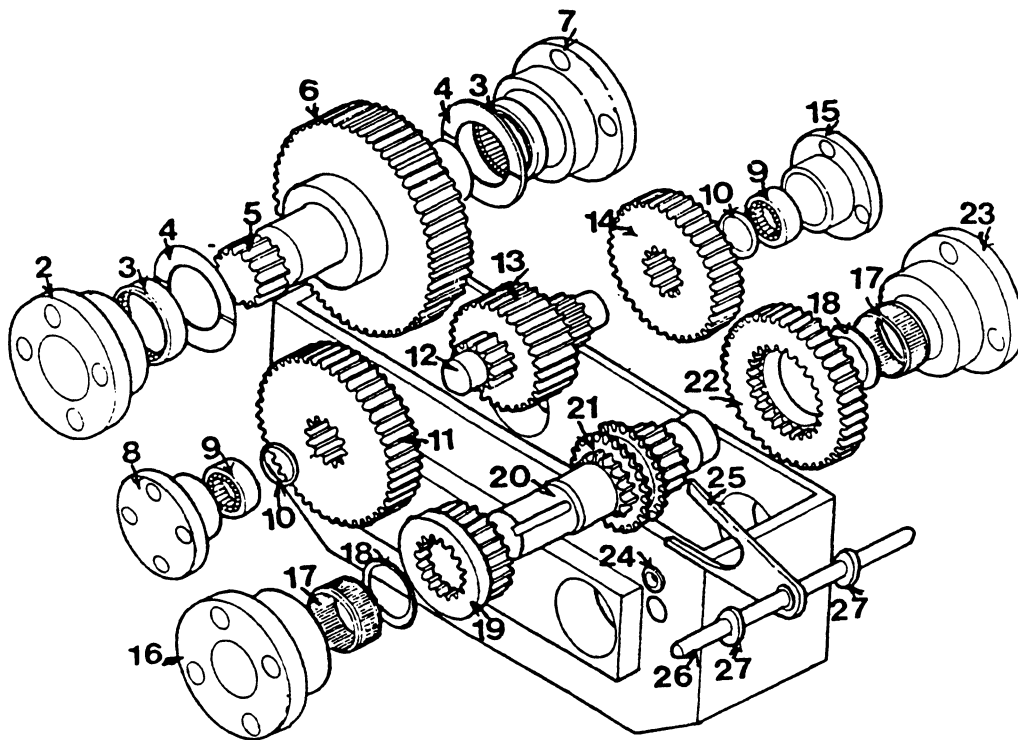


ITEM NO.	PART NO.	DESCRIPTION	QTY.
1	900401	Hydraulic Drive Motor (1-1/4" Spline) When ordering this part use part #810240)	2
2	900402	H1 Bushing	2
3	900403	CHC50 H16	2
4	900404	50/2 Chain	2
5	900405	Right Jack Shaft	1
6	900406	Left Jack Shaft (Turn down to 1")	1
7	900407	Drive Tray	1
8	900408	1 1/4" Pillowblock Bearing	2
9	900409	Torque Limiter (1" x 1")	1
10	900410	Torque Limiter Disks	2
11	900411	Woodruff Key (Motor) (N/S)	2
12	900412	Torque Limiter Key (N/S)	2
13	900413	CHC50 16 Spline 1" x 6 (N/S)	2
14	900414	Left Jack Shaft 1 1/4" (N/S)	1
15	900415	Torque Limiter Hub 1 1/4" (N/S)	1
16	900424	Torque Limiter (1" x 1 1/4)	1
17	900425	Chain Coupling Half (CHC5016 x 1 1/4" Spline)	2
18	900426	Torque Limiter Chain	1
19	900427	Cover, Tray (N/S)	1
20	900532	Chain, Drive (N/S)	2
21	900429	Torque Limiter Hub (1") (N/S)	1
22	900421	Double Master Link (50)	2
23	860049	Master Link (60H) (N/S)	2
24	900423	1/2 Link (60H) (N/S)	2

SECTION 6 PARTS

6.5 TRANSMISSION ASSEMBLY

* Gears Sold In Match Sets ONLY.



*830450
*830460
831470

* GROUPS SOLD IN MATCH SETS ONLY

Low Gear, (For Centershaft) & Low Gear, (For Frontshaft) Set • Item #15 & #20
High Gear, (For Centershaft) & High Gear, (For Frontshaft) Set • Item #18 & #23
•Kit* Heavy Duty Bull & Intermediate Gear, Rear Shaft & Spacer Set - Item #6 & 7
(Note: When replacing these items, do not install snap ring on rear shaft, on models that have the chain going down to gearbox.)

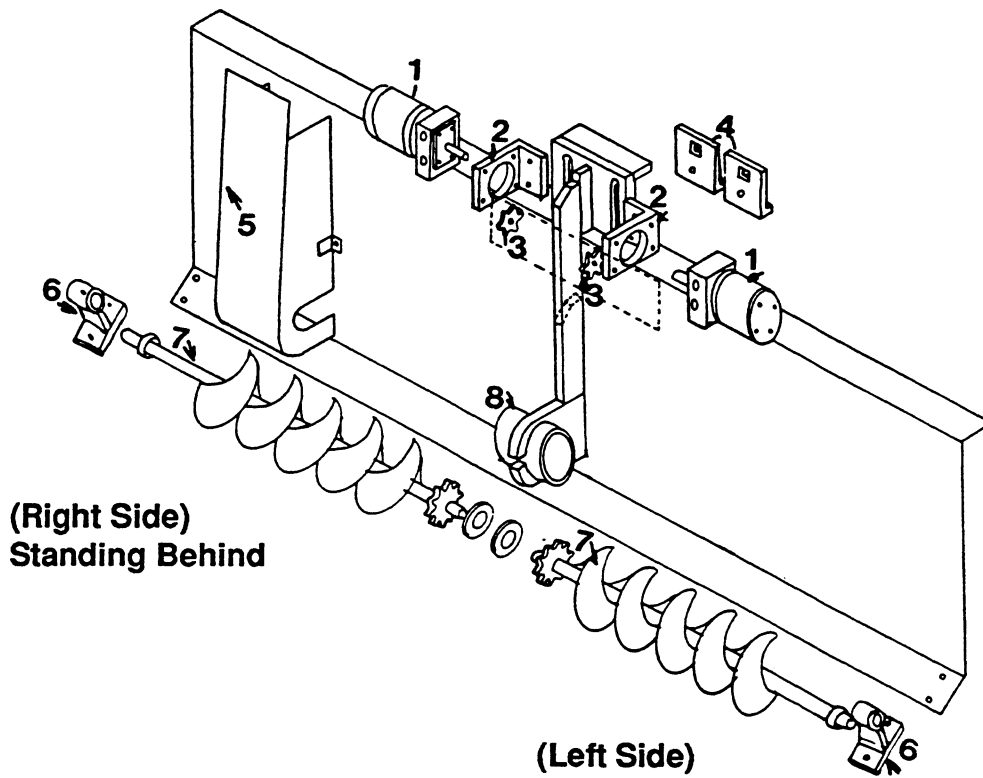
TRANSMISSION ASSEMBLY



ITEM NO.	PART NO.	DESCRIPTION	QTY.
1	900500	Complete Transmission (R/H)	
1A	900501	Complete Transmission (L/H)	
2	900502	Rear Cap for Seal (When ordering this part use part #830041)	1
3	900503	Rear Bearing (When ordering this part use part #830050)	2
4	900504	Rear Spacer	(A/R)
5	900505	Rear Shaft (When ordering this part use part #830082)	1
6	900506	Bull Gear (Sold in matching sets only, use part #831470)	1
7	900507	Rear Cap Without Seal (When ordering this part use part #830101)	1
8	900508	Center Cap Plain (When ordering this part use part #830111)	1
9	900509	Center Bearing (When ordering this part use part #830120)	2
10	900510	Center Spacer (When ordering this part use part #830140)	(A/R)
11	900511	Low Gear (Center Shaft) (When ordering this part use part #830450)	1
12	900512	Center Shaft (When ordering this part use part #830171)	1
13	900513	Intermediate Gear (When ordering this part use part #831470)	1
14	900514	High Gear (Center Shaft) (When ordering this part use part #830460)	1
15	900515	Center Cap Plain (When ordering this part use part #830111)	1
16	900516	Front Cap for Seal (When ordering this part use part #830321)	1
17	900517	Front Bearing (When ordering this part use part #830120)	2
18	900518	Front Spacer (When ordering this part use part #830140)	(A/R)
19	900519	Low Gear (Front Shaft) (Bearing N/S)(When ordering this part use part #830450)	1
20	900520	Front Shaft (When ordering this part use part #830211)	1
21	900521	Clutch Gear (When ordering this part use part #830221)	1
22	900522	High Gear (Front Shaft) (Bearing N/S)(When ordering this part use part #830460)	1
23	900523	Front Cap Without Seal (When ordering this part use part #830251)	1
24	900524	Shifter Seal (When ordering this part use part #830280)	2
25	900525	Shifter Fork (When ordering this part use part #830291)	1
26	900526	Shifter Shaft (When ordering this part use part #830311)	1
27	900527	Shifting Fork Collars (When ordering this part use part #830300)	2
28	900528	Dip Stick (When ordering this part use part #830191)	1
29	900529	Input Sprocket 60P25 (N/S) (Older Models) (N/A) (When ordering this part, use part #900538)	1
30	900530	Input Sprocket Bushing P1-1 1/4" (N/S)	1
31	900531	Output Sprocket (80-22 Splined) (N/S) (When ordering this part use part #830020)	1
32	900532	Drive Chain (N/S)	1
33	900533	Bearing for 19 & 22 (N/S) (When ordering this part use part #830270)	2
34	900534	Rear Seal (N/S) (When ordering this part use part #830030)	1
35	900535	Front Seal (N/S)	1
36	900536	Hardened Keys (N/S) (When ordering this part use part #830071)	2
37	900537	Key, Input Sprocket (N/S)	1
38	900538	Input Sprocket (60P26)	1
39	831421	Bolts for Caps (Note: must know if fine or coarse)	(A/R)
40	810180	Chain (80/2)	1

SECTION 6 PARTS

6.6 AUGER AND BACK ASSEMBLY



NOTE: IF ORDERING AUGER MOTOR TO GO WHERE 1" KEYED SHAFT WENT, MUST ORDER PART #900613 WITH BOLT & WASHERS TO HOLD SPROCKET ON. (NEW MOTORS HAVE SPLINE SHAFTS)

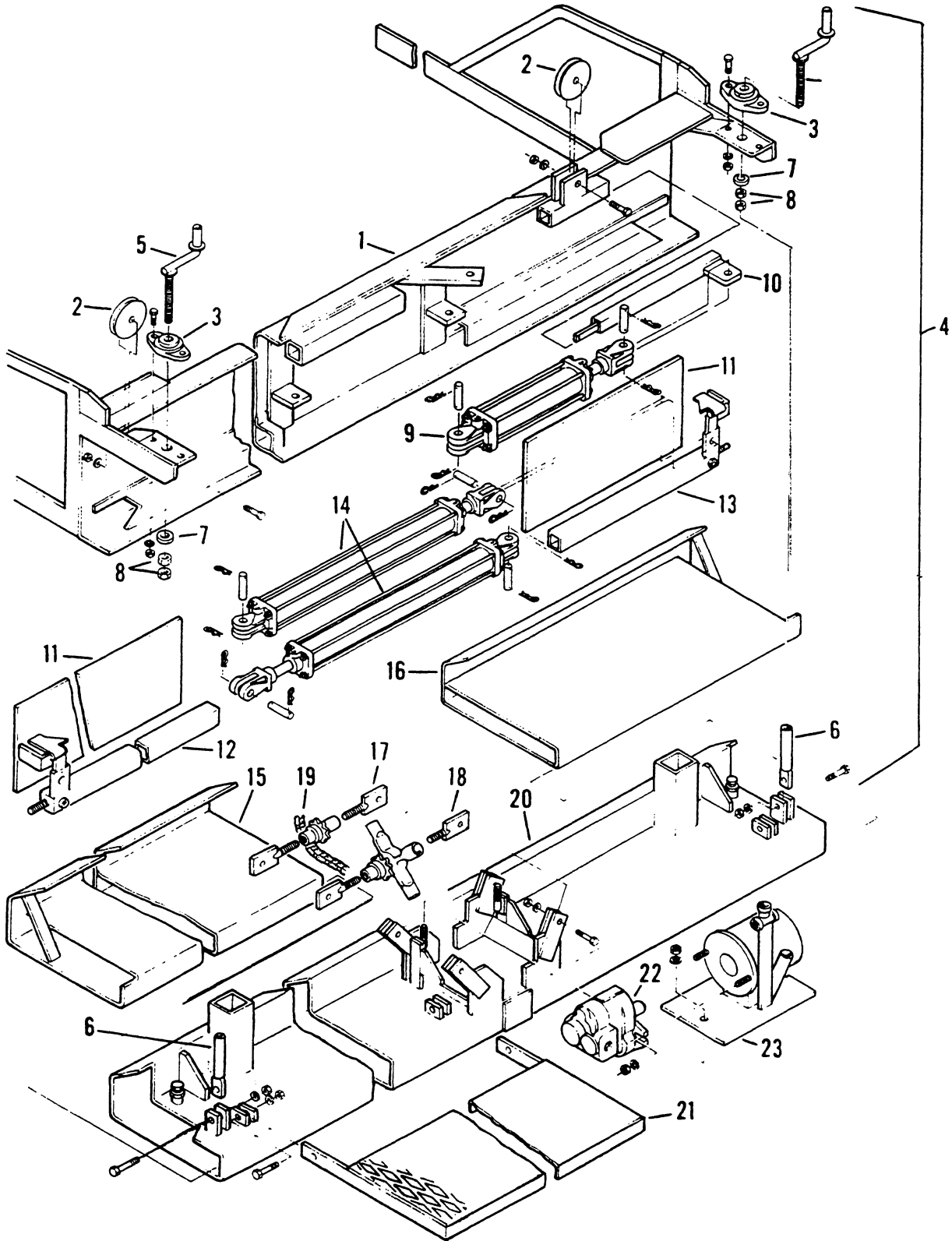
AUGER AND BACK ASSEMBLY



ITEM NO.	PART NO.	DESCRIPTION	QTY.
1	900601	Auger Hydraulic Motor (When ordering this part use part #860010)	2
2	900602	Auger Motor Holder (When ordering this part use part #860021)	2
3	900603	H6010 X1 Sprocket	2
4	900604	Auger Motor Adjustment (N/A)	
5	900605	Auger Cover	2
6	900606	Auger End Mounts (N/S) (N/A) (When ordering this part use part #900618)	2
7	900607	Auger L/H (9')	1
7A	900607A	Auger R/H (9')	1
8	900608	Auger Bearings (When ordering this part use part #860060)	2
9	900609	Woodruff Key (Motor) (N/S)	2
10	900610	Auger Flight R/H (When ordering this part use part #860100)	(A/R)
11	900611	Auger Flight L/H (When ordering this part use part #860110)	(A/R)
12	900612	Grease Fittings (N/S) (Screw In)	2
13	900613	H60B12 Sprockets (Spline) (N/S)	2
14	900614	Seal Kits (N/S)	(A/R)
15	900615	Auger Extension (N/S) (11") (Specify L/R) (When ordering this part use part #860132)	1
16	900616	Auger Cover (New) (N/S)	1
17	900617	Tubing End Mount (N/S)	2
18	900618	Auger End Mount (New Style) (N/S)	2
19	900619	Auger, L/H (8')	1
20	900620	Auger, R/H (8')	1
21	860090	Chain, Auger	2
22	860035	Sprocket Auger (60A18)	2

SECTION 6 PARTS

6.7 SCREED ASSEMBLY



SCREED ASSEMBLY



ITEM NO.	PART NO.	DESCRIPTION	QTY.
		Screed Assembly (See below for part # of assembly needed)	
1	800401	Support Screed	1
2	800402	Pulley (When ordering this part use part #870020)	2
3	900704	Bearing (When ordering this part use part #870030)	2
4	900703	Flight Screw Assembly (Includes 5,6,7 & 8) (When ordering this part use part #870042)	2
5	800403	Screw, Upper Flight (N/A) (Must buy complete Flight Screw Assy.) (When ordering this part use part #870042)	
6	800404	Screw, Lower Flight (N/A) (Must buy complete Flight Screw Assy.) (When ordering this part use part #870042)	
7	800405	Spacer (Comes with complete Screed Assembly)	2
8	800406	Nut (Comes with complete Screed Assembly)	4
9	900709	Cylinder, Screed Lift (3" x 10") (When ordering this part use part #870090)	1
10	800407	Guide, Screed Lift (When ordering this part use part #870102)	1
11	800408	Guide, Side Extension (When ordering this part use part #870112)	2
12	800409	Guide Extension L/H (When ordering this part use part #870122)	1
13	800410	Guide Extension R/H (When ordering this part use part #870132)	1
14	900705	Cylinder, Extension (2" x 24")	2
15	800411	Screed Extension Inner L/H (N/A)	
16	800412	Screed Extension R/H (N/A)	
17	900808	Crown, (Front) (When ordering this part use part #870172)	1
18	900809	Crown, Adjustable (Rear)(When ordering this part use part #870182)	1
19	800413	Chain, Crown (When ordering this part use part #870190)	1
20		Screed, Complete (See Screed Listings)	
21	900708	Platform, Walk (9')	2
22	900801	Motor, Hydraulic Vibrator (When ordering this part use part #870220)	1
23	800415	Vibrator, Assembly (When ordering this part use part #870232)	1
24	900706	Cable, Screed Left (N/S) (When ordering this part use part #870260)	1
25	900710	Cable, Screed Right (N/S) (When ordering this part use part #870270)	1
26	900711	Eye Bolts (N/S) (When ordering this part use part #870284)	2
27	900712	Wire Thimble (N/S) (When ordering this part use part #870286)	4
28	900713	3/8" U-Bolts (N/S) (When ordering this part use part #870289)	4
29	900714	Seal Kit Ext. (N/S)	(A/R)
30	900715	Seal Kit Screed Lift (N/S)	1
31	900716	Screed Ext. Plates (Kit) (3-1') (2-6") (Need to know if extension measures 14 1/2" or 16 1/2" when ordering)	1 Kit
32	900717	Screed Ext. Plates (Kit) 1'	(A/R)
33	900718	Screed Ext. Plates (Kit) 6"	(A/R)
34	900719	Screed Ext. Plates (Kit) 2'	(A/R)
35	900720	Angle To Pull Extension (N/S)	2
36	900721	Roll Up Curber 18" (N/S)	
37	900722	Roll Up Curber 24" (N/S)	
38	900723	800 Screed (8'2" x 15")	
39	900724	900 Screed (9' 2" x 15")	

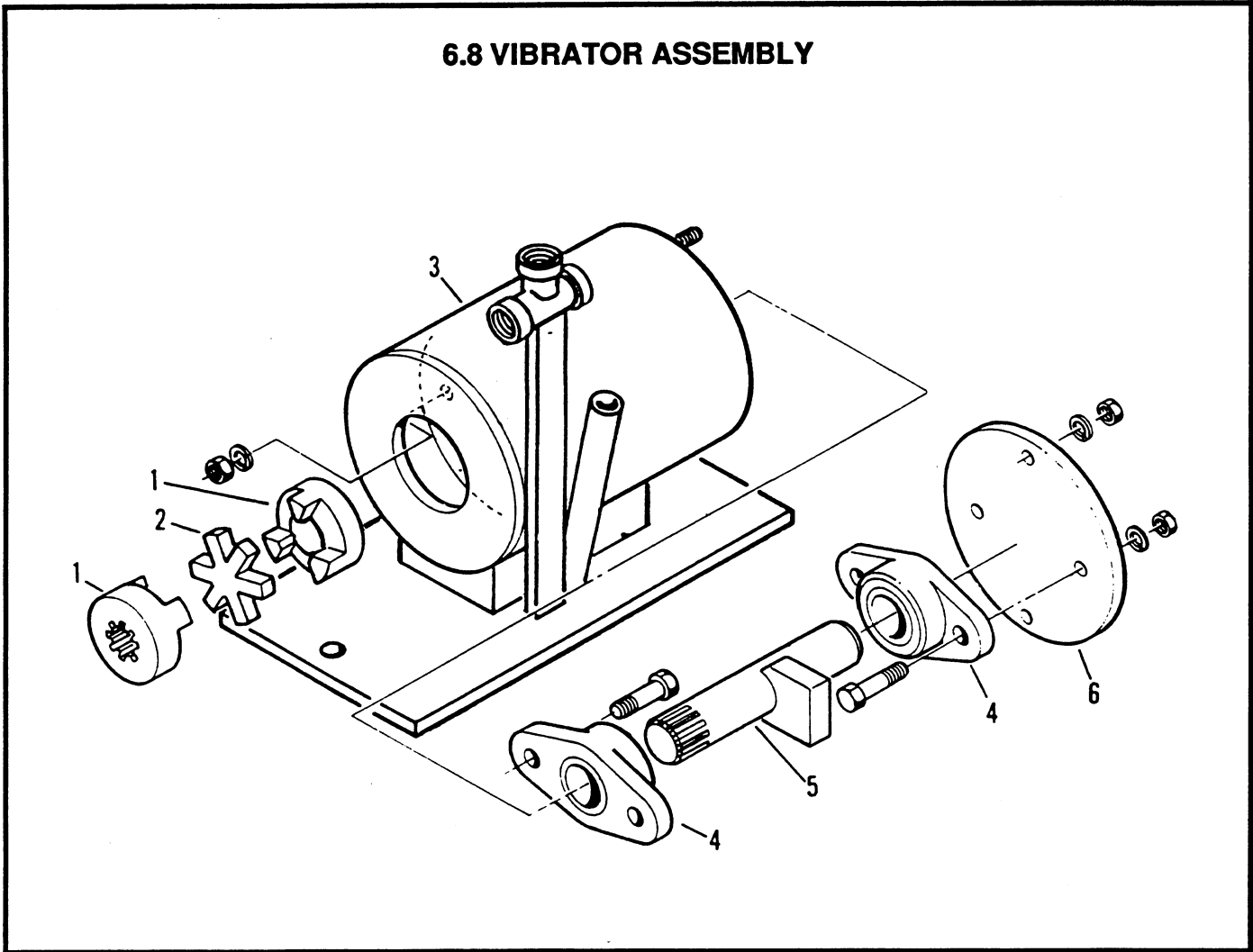
(Continued Next Page ...)

SCREED ASSEMBLY (Continued)



ITEM NO.	PART NO.	DESCRIPTION	QTY.
40	900725	1000 Screed (9' 2" x 17")	
41	900726	700 Screed (8' 0" x 15")	
42	900728	(8') 1000B (8'0" x 17")	
43	900729	(8') 1000 (8' 2" x 17")	
44	900730	Complete Screed Assembly (9') 1000 (9' 2" x 17") With Cylinders	
45	900731	Complete Screed Assembly (9') 1000 (9' 2" x 17") Without Cylinders	
46	900732	Complete Screed Assembly (8') 1000 (8' 0" x 17") With Cylinders	
47	900733	Complete Screed Assembly (8') 1000 (8' 0" x 17") Without Cylinders	
48	900734	800 Screed Assembly Complete (8' 2" x 15") With Cylinders	
49	900735	800 Screed Assembly Complete (8' 2" x 15") Without Cylinders	
50	900736	900 Screed Assembly Complete (9' x 2" x 15") With Cylinders	
51	900737	900 Screed Assembly Complete (9' 2" x 15") Without Cylinders	
52	900738	(6") Strike-Offs	
53	900739	(1') Strike-Offs	
54	900740	(1'6") Strike-Offs	
55	900741	(2') Strike-Offs	
56	900668	Screed, Complete Assembly (8') 1000 (8' 2" x 17") Includes Inserts and Crown and Valley w/o Cylinders	
57	900669	Screed, Complete Assembly (8') 1000 (8' 2" x 17") w/Cylinders Inserts and Crown and Valley	
58	870274	Bearings, Pulley (N/S)	2
59	870212	Platform, Walk (8') (N/S)	2

6.8 VIBRATOR ASSEMBLY

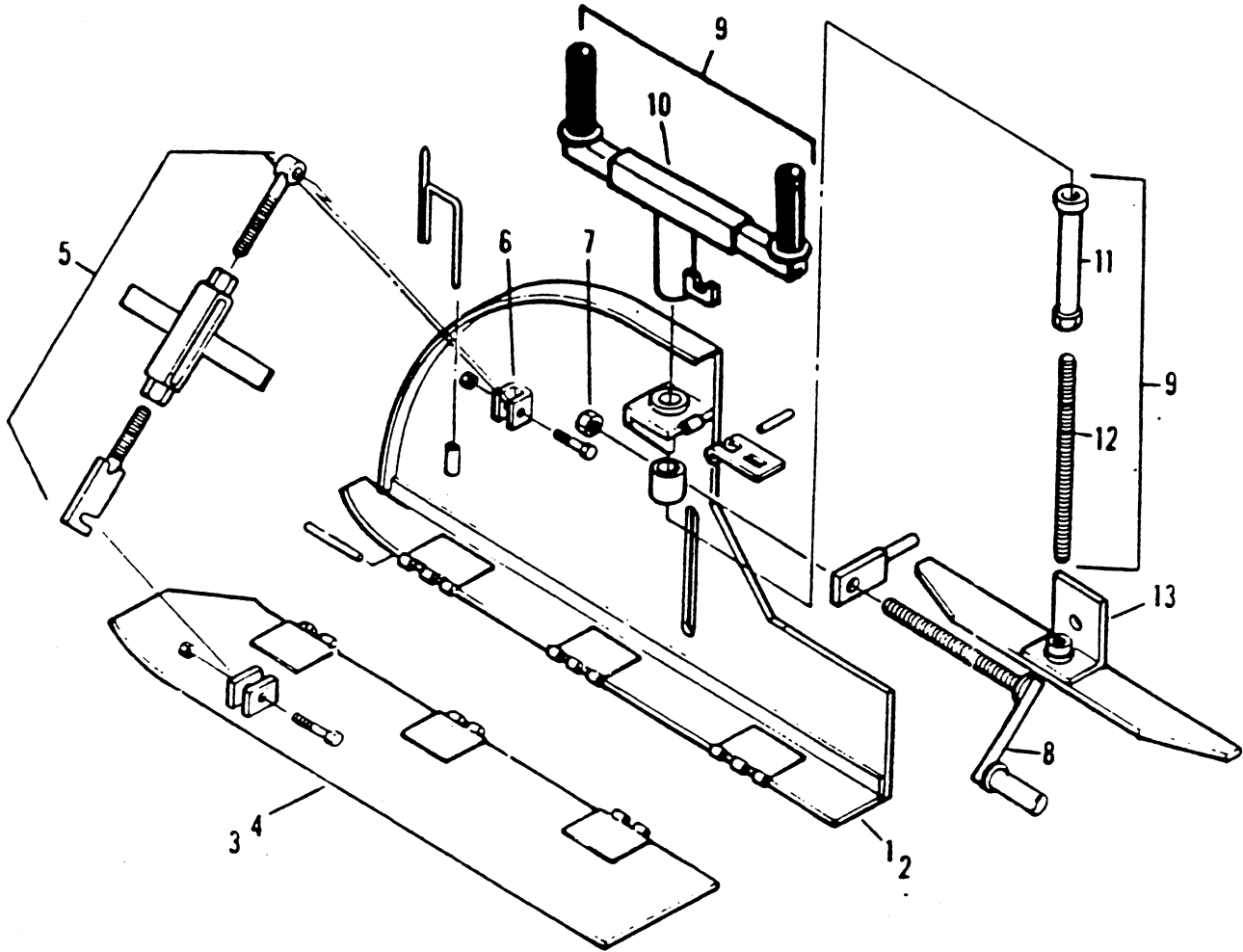


VIBRATOR ASSEMBLY

ITEM NO.	PART NO.	DESCRIPTION	QTY.
	800417	Vibrator Assembly (Includes 1 - 6)	
1	900803	Coupling, CHJP (5/8") (When ordering this part use part #280030) (CHJP 1" Use part #880030)	1
2	900805	Insert, Coupling JS4N (When ordering this part use part #280040)	1
3	900806	Housing, Vibrator (When ordering this part use part #880042)	1
4	900804	Bearing, Vibrator (When ordering this part use part #250150)	2
5	900807	Shaft, Vibrator (When ordering this part use part #880062)	1
6	800418	Plate, Housing (When ordering this part use part #880071)	1

SECTION 6 PARTS

6.9 JOINTER ASSEMBLY



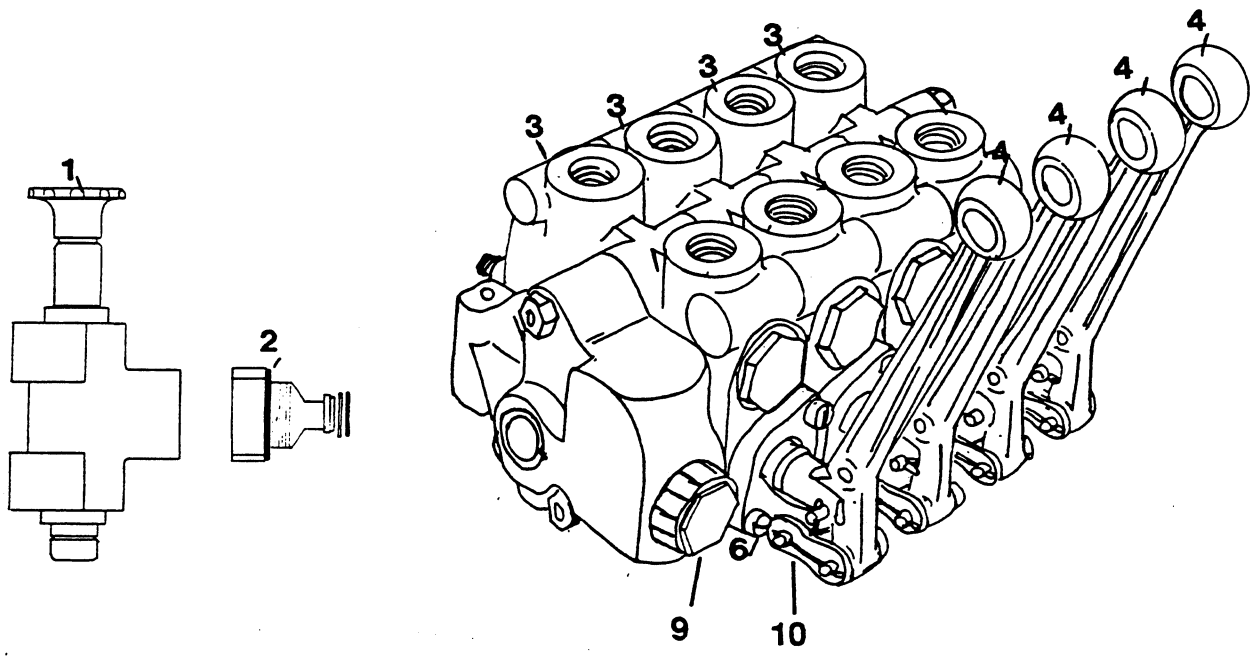
JOINTER ASSEMBLY



ITEM NO.	PART NO.	DESCRIPTION	QTY.
	800419	Jointer Assembly L/H (When ordering this part use part #890001)	1
	800420	Jointer Assembly R/H (When ordering this part use part #890002)	1
1	800421	Jointer, Guide Support L/H (When ordering this part use part #890011)	1
2	800422	Jointer, Guide Support R/H (When ordering this part use part #890021)	1
3	800423	Guide, Jointer Extension L/H (When ordering this part use part #890031)	1
4	800424	Guide, Jointer Extension R/H (When ordering this part use part #890041)	1
5	900701	Turnbuckle Assembly (When ordering this part use part #890051)	1
6	800425	Bracket, Turnbuckle (When ordering this part use part #890060)	1
7	800426	Nut, Tilt Screw (When ordering this part use part #890070)	1
8	900707	Screw, Tilt Adjustable (When ordering this part use part #890081)	1
9	900702	Screw Depth Control Assembly (When ordering this part use part #890092)	1
10	800427	Handle, Depth Control (Slide) (N/A) (Must buy complete screw assembly) (When ordering this part use part #890092)	
11	800428	Adjuster, Depth Control (N/A) (Must buy complete screw assembly) (When ordering this part use part #890092)	
12	800429	Rod, Adjuster (When ordering this part use part #890121)	1
13	800430	Bracket, Depth Control (When ordering this part use part #890132)	1
14	870276	Boot, Rubber (Handles)	2
15	940004-1	Scale (0 to 6")	1
16	890137	Roll Pin 3/16"	1

SECTION 6 PARTS

6.10 HYDRAULIC ASSEMBLY



HYDRAULIC HOSES ARE AVAILABLE WITH DESCRIPTION

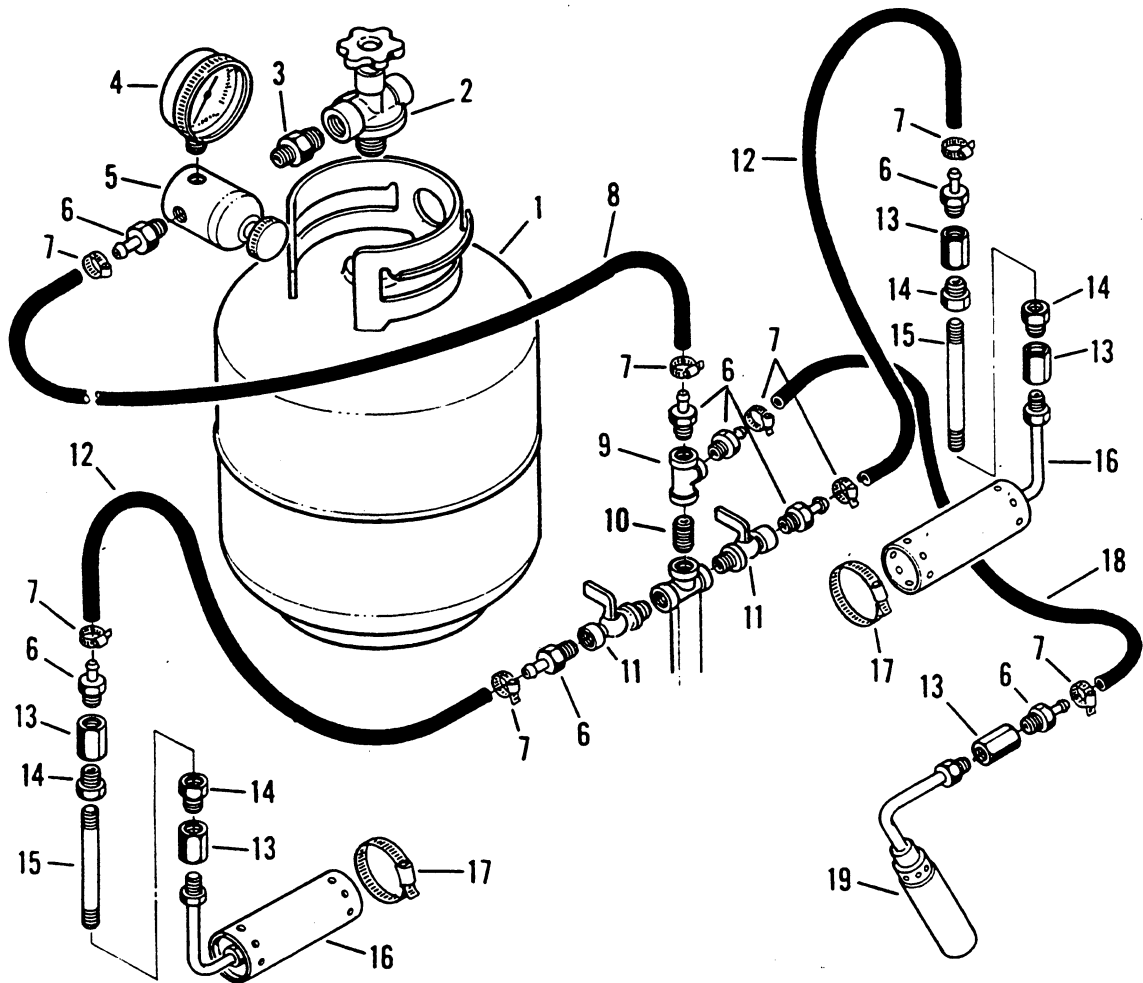
HYDRAULIC ASSEMBLY



ITEM NO.	PART NO.	DESCRIPTION	QTY.
1	901001	Selector Valve (When ordering this part use part #910080)	1
2	901002	Power Beyond	1
3	901003	Valve (Available in Sections) (When ordering this part use part #910052)	(A/R)
4	901004	Vertical Handle (Auger) (When ordering this part use part #910060)	6
5	901005	Horizontal Handle (N/S) (Drive) (When ordering this part use part #910070)	4
6	901006	Valve Lever Bracket (When ordering this part use part #910058)	10
7	901007	Detente Kit (N/S)	4
8	901008	Seal Kit (N/S) (When ordering this part use part #910062)	(A/R)
9	901009	Relief	2
10	901010	Link Assembly (Handle)	10
11	901011	R/H Drive Handles (N/S) (When ordering this part use part #920210)	4
12	901012	Inside Seals (N/S) (When ordering this part use part #910062)	(A/R)
13	901013	Valve Decal (N/S) (When ordering this part use part #940004-18)	1
14	901014	Spring Return Kit (N/S)	6
15	901015	Relief, (JL/75) (N/S)	1
16	910140	Valve, Ball Vibrator (N/S)	1
17	901016	Hydraulic Tubing Set (1000)	Set
	901017	Right Drive Tubing	2
	901018	Left Drive Tubing	2
	901019	Center Lips	2
	901020	R/H Cut-offs	2
18	910054	Section, Valve Cylinders	6
19	920050	Inlet, Mid with Reliefs (Sections)	1
20	920052	Plugs, Internal (Screws Male & Female) (Older Models)	(A/R)
21	920055	Sections, Left Drive	1
22	920057	Section, Right Drive	1

SECTION 6 PARTS

6.11 PROPANE HEATER ASSEMBLY



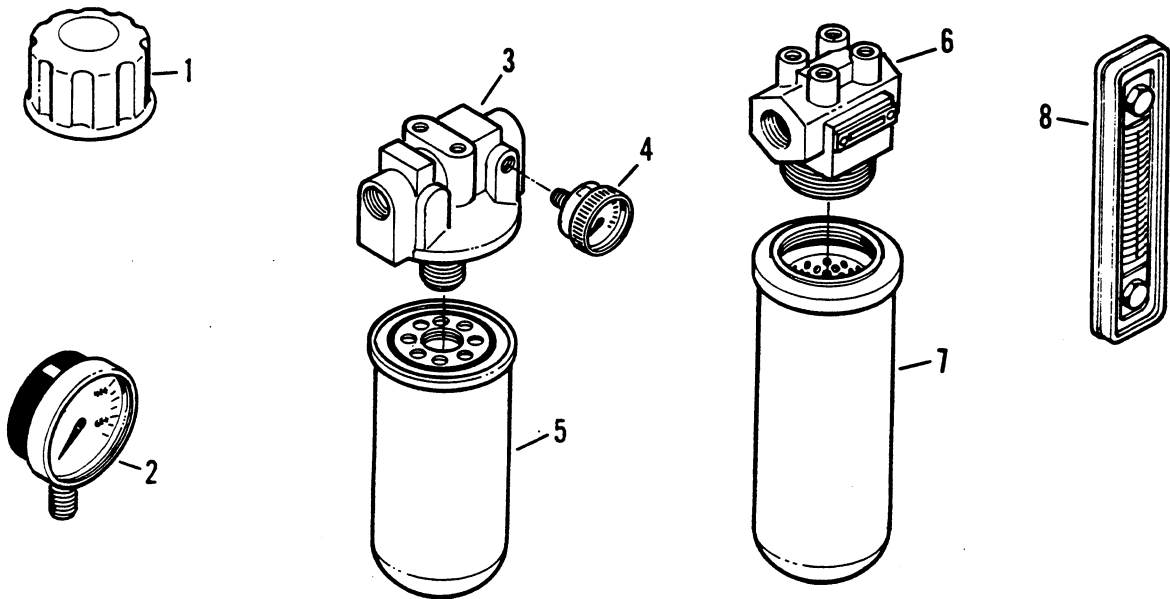
PROPANE HEATER ASSEMBLY



ITEM NO.	PART NO.	DESCRIPTION	QTY.
1	901101	Tank, Propane (When ordering this part use part #230010)	1
2	901111	Valve, Tank (N/A) (When ordering this part use part #230010) (Comes With Tank)	1
3	901112	Adapter (N/A) (When ordering this part use part #230100) (Comes With Regulator)	1
4	901113	Gauge, Regulator (When ordering this part use part #230110)	1
5	901114	Valve, Regulator (When ordering this part use part #230100)	1
6	901115	Connector (When ordering this part use part #230150)	8
7	901116	Clamp (When ordering this part use part #230160)	8
8	901117	Hose, Main (When ordering this part use part #230000)	(A/R)
9	901106	Tee, 90° (When ordering this part use part #230080)	1
10	901107	Nipple (When ordering this part use part #230140)	1
11	901118	Valve, Cut-off (When ordering this part use part #230070)	3
12	901119	Hose, Screed (When ordering this part use part #230000)	(A/R)
13	901120	Reducer (When ordering this part use part #230170)	3
14	901121	Coupling (N/A)	6
15	901122	Pipe (When ordering this part use part #230999)	3
16	901109	Burner, Screed (BP6) (When ordering this part use part #230191)	2
17	901123	Clamp (When ordering this part use part #230240)	2
18	901124	Hose, Ignitor (When ordering this part use part #230000)	(A/R)
19	901108	Ignitor (BP4) (When ordering this part use part #230200)	1
20	910025	Burner, Screed (BP5) (Older Models)	2

SECTION 6 PARTS

6.12 ACCESSORIES



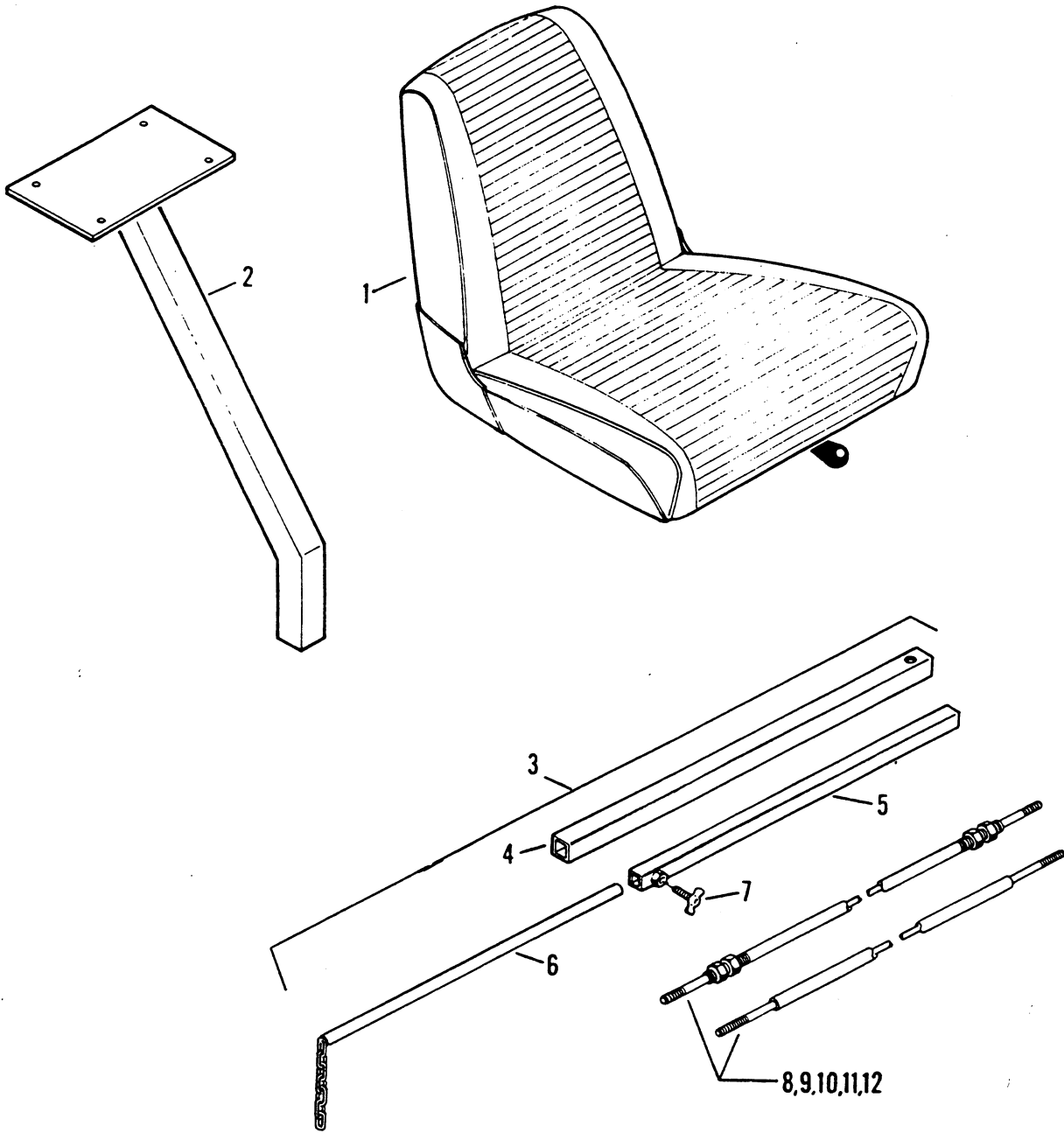
ACCESSORIES



ITEM NO.	PART NO.	DESCRIPTION	QTY.
1	800015	Cap, Tank (When ordering this part use part #910160)	1
2	800016	Gauge, Hydraulic Pressure (When ordering this part use part #330030)	1
3	800017	Head Casting, Hydraulic-Suction (Serial # Required)	1
4	800018	Gauge, Hydraulic Flow-Suction (Serial # Required)	1
5	800019	Element Suction (Serial # Required)	1
6	800020	Head Cast-Charge (When ordering this part use part #290010)	1
7	800021	Element Charge (When ordering this part use part #290030)	1
8	800022	Gauge, Tank Fuel Level	1
9	910020	Suction Strainer (N/S)	1
10	800024	Temperature Gauge (N/S) (When ordering this part use part #330040)	1
11	800050	Maintenance Kit Includes: (N/S) (Hatz)	
	310070	Oil Filters	2
	310080	Fuel Filters	2
	310060	Air Filters	1
	320090	Hatz Belt	1
	320380	Hatz Engine Key	1
12	901210A	Spray Nozzles Tips (N/S)	2
13	900121	Hour Meter (N/S) (When ordering this part use part #900130)	1
14	910150	Petcock (N/S)	1
15	910010	Gauge, Fuel (New) (N/S)	1
16	290012	Gauge, Head (Charge)	1

SECTION 6 PARTS

6.13 SEAT, GUIDE BAR AND CABLE ASSEMBLIES



SEAT, GUIDE BAR AND CABLE ASSEMBLIES *LeeBoy*

ITEM NO.	PART NO.	DESCRIPTION	QTY.
1	800023	Seat (When ordering this part use part #360010)	1
2	800024	Support, Seat (When ordering this part use part #920022)	1
3	800025	Guide, Bar Assembly (8') (When ordering this part use part #920033)	1
4	800026	Guide, Bar Outer (N/A)	1
5	800027	Guide, Bar Med. (N/A)	
6	800028	Guide, Bar Inner (9') (When ordering this part use part #920065)	1
6A	920062	Guide Bar, Inner (8')	1
7	800029	Lock, Guide Bar Adjuster (When ordering this part use part #920070)	1
8	800030	Cable, Shifting (86" x 3") (When ordering this part use part #810060)	1
9	800031	Cable, Throttle (32" x 3") (Old Style)	1
10	800032	Cable, Drive (116" x 3" (When ordering this part use part #920140)	2
11	800033	Cable, Auger (116" x 3") (When ordering this part use part #920140)	1
12	800034	Cable, Extension (123" x 3") (When ordering this part use part #920130)	1
13	800035	Cable Pump (Old Style) (116" x 3") (When ordering this part use part #920140)	1
14	800036	Guide Bar Assembly (9') (When ordering this part use part #920035)	1
15	800037	Screed Bracket (Seat) (N/S)	1
16	800038	1/4" Clevis (When ordering this part use part #350050)	8
17	800039	3/8" Clevis (When ordering this part use part #810050)	2

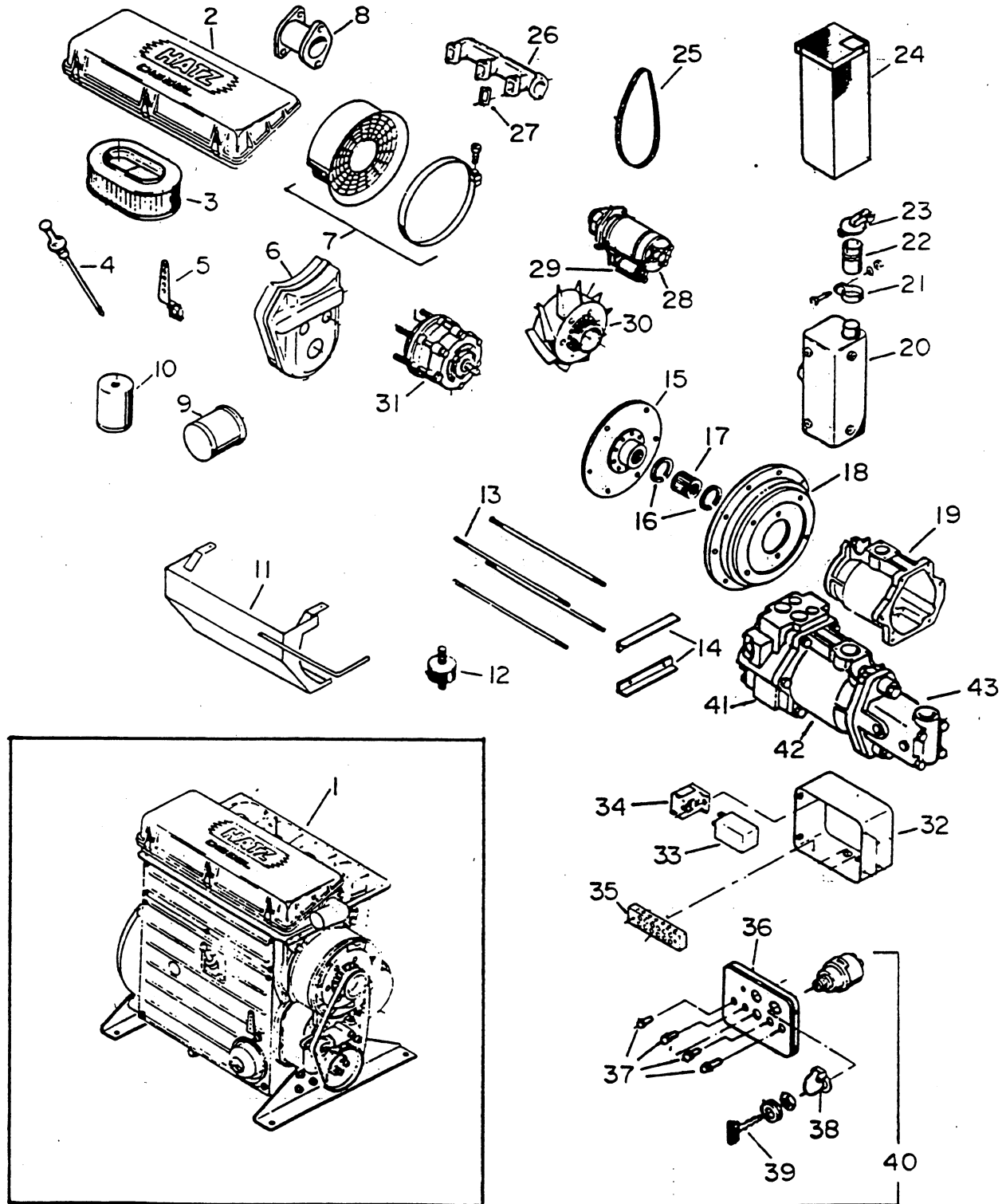
ITEM NO.	PART NO.	DESCRIPTION	QTY.
1	800000	Tyrone Double Pump	1
2	800001	Engine Coupling Half (1-7/16")	1
3	800002	Pump Coupling Half (Specify 3/4" or 7/8")	1
4	800003	JS6N Insert	1
5	800004	Electric Spray Handle (When ordering this part use part #920220)	1
6	800005	Electric Spray Pump (When ordering this part use part #900010)	1
7	800006	Electric Spray Tank	1
8	800007	Cut-off Cylinder (2" x 4")	2
9	800008	Hopper-Rubber Flashing (9') (When ordering this part use part #930014)	1
10	800012	Sunstrand Pump	1
11	800013	Eaton Pump	1
12	800014	Murphy Motor Mounts	4
13	800015	Hatz Motor Mounts (When ordering this part use part #320140)	4
14	800016	Manifold, Murphy	1
15	800017	Manifold, Hatz (2 Cylinder) (When ordering this part use part #320250)	1
16	800018	Muffler, Hatz (When ordering this part use part #320040)	1
17	800019	Raincap, Hatz (When ordering this part use part #320010)	1
18	800020	Decal Kits - (See Note Next Page)	1
19	800021H	Hatz Pump Plate - (See Note Next Page)	1
20	800022M	Murphy Pump Plate (See Note Next Page)	1
21	800023W	Wisconsin W-4 Engine	1
22	800024M	Murphy 302-2 Diesel Engine	1
23	800025H	Hatz 2m 40L	1
24	800026K	23 H.P. Kohler	1
		SEAL KITS	
25	800027	Drive Motors	2
26	800028	Auger Motors	2
27	800029	Lip Cylinder	1
28	800030	Cut-off Cylinder	2
29	800045	Screed Lift	1
30	800046	Extension Cylinder	2
31	800033	Vibratory Motor	1
32	800034	Variable Volume Pump	1
33	800035	Double Pump	1
34	800036	Single Pump	1

OTHER PARTS NOT SHOWN (Continued) *LeeBoy*

ITEM NO.	PART NO.	DESCRIPTION	QTY.
35	930036	Lip Cylinder (N/S) (4" x 14")	1
37	800072	Cable, Battery (+) (N/S) (Hatz)	1
38	800076	Cable, Battery (-) (N/S) (Hatz)	1
39	910175	Pump & Vibrator BRK (Old Style) (Aluminum)	1
40	930003	Hopper-Rubber (8')	1
41	930004	Bracket, Shield (8')	1
42	930011	Bracket, Shield (9')	1
		<p>NOTE: Hatz Pump Plate - Need to know which one of the three you need - Measure shaft and count splines.</p> <p>1 - 320175 - 15 Tooth Spline</p>	1
		2 - 320173 - 13 Tooth Spline	1
		3 - 800021H 7/8" Key	1
		<p>NOTE: Murphy Pump Plate - Need to know if pump has spline or keyed shaft.</p> <p>Part # Spline 123249</p>	1
		Part # Keyed - Metal Hub - 042202 - 1046	1
		800022M Fiber Plate - 048160 - 2410	1
		DECAL KITS: TILT HOPPER PAVERS (1983 up to 1994)	
	941000-01	Model 700	1
	941000-02	Model 800	1
	941000-03	Model 900	1
	941000-04	Model 1000	1

SECTION 6 PARTS

6.15 ENGINE AND PUMP COMPONENTS



SAFETY DECALS & INFORMATIVE DECALS *LeeBoy*

ITEM NO.	PART NO.	DESCRIPTION	QTY.
	941000 - 01	Model 700	1
	941000 - 02	Model 800	1
	941000 - 03	Model 900	1
	941000 - 04	Model 1000	1
1	940001-1	Located in the upper L/H corner of fuel tank	1
2	940001-2	Located just below fuel tank mount	1
3	940001-3	Located on the upper rear of side panels	2
4	940001-4	Located on the hydraulic tank, L/H top	1
5	940001-5	Located under the lip on the left side	1
6	940001-6	Located on the flat surface of guard plate	2
7	940001-7	Located on the front of drive lever controls	1
8	940001-8	Located on both sides of Auger back top	2
9	940001-9	Located on both sides of front lower edge of Hopper	2
10	940001-10	Located on the shifter handle	1
11	940001-11	Located on front of the conveyor lift valve	1
12	940001-12	Located on shifter bracket (Gearbox Only)	1
13	940002-1	Located in front center of paver	2
14	940002-2	Located underneath lip by the track adjuster	1
15	940002-3	Located on toolbox	1
16	940002-4	Located on flat surface, just ahead of the flight screw	2
17	940002-5	Located on hopper sides 4" in and about 8" down from the top rear	3
18	940002-6	Located on vibrator control	1
19	940002-7	Located under the hopper on gearbox	2
20	940003-1	Located on the motor shield	1
21	940003-2	Located on both hopper sides, 1 1/2" up from the edge	2
22	940003-3	Located on the center of hose containment guards	2
23	940003-4	Located behind the "B" on decal #21 (High Deck Only)	2
24	940004-1	Located on both end gates	2
25	940004-2	Located on the instrument panel, so the arrows point to the correct component	1
26	940004-3	Located on the drive controls with the "N" by the notch showing position of neutral	1
27	940004-4	Located on the face plate, up from the valve	1
28	940004-5	Located on the face plate ahead of right hand drive controls	1

